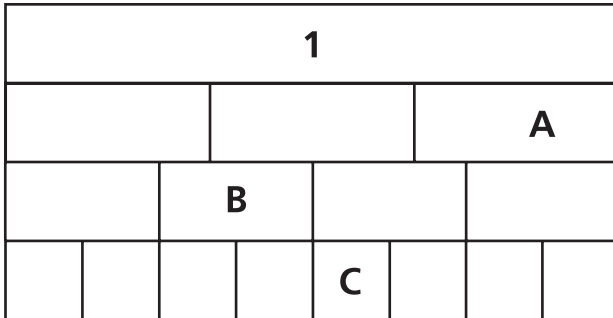


For 1 to 3, write the fraction that represents the section with the given letter.



1 Section A

2 Section B

3 Section C

4 Max is putting his colored pencils in boxes. He puts 8 pencils in a box. Three of the 8 pencils in each box are red. Out of 32 pencils, how many are red?

For 5 to 7, write a fraction that is equivalent to the given fraction.

5 $\frac{1}{3}$

6 $\frac{2}{7}$

7 $\frac{2}{5}$

For 8 and 9, complete the fractions.

8 $\frac{4}{14} = \frac{\blacksquare}{7}$

9 $\frac{3}{5} = \frac{9}{\blacksquare}$

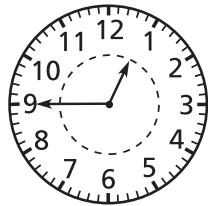
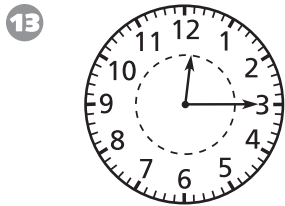
For 10 to 12, compare the fractions using $<$, $>$, or $=$.

10 $\frac{3}{8}$ ○ $\frac{3}{10}$

11 $\frac{1}{2}$ ○ $\frac{7}{8}$

12 $\frac{1}{3}$ ○ $\frac{1}{6}$

For 13 and 14, write a number sentence that is shown by the picture.

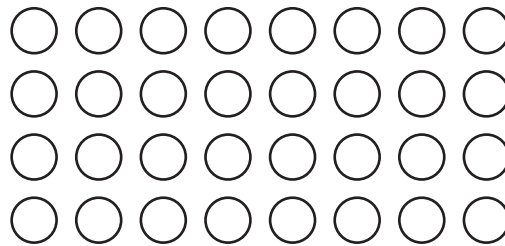


14

| Sun | Mon | Tue | Wed | Thu | Fri | Sat |
|---------------|---------------|---------------|---------------|---------------|---------------|---------------|
| | | | 1 | 2 | 3 | 4 |
| 5 | 6 | 7 | 8 | 9 | 10 | 11 |
| 12 | 13 | 14 | 15 | 16 | 17 | 18 |
| 19 | 20 | 21 | 22 | 23 | 24 | 25 |
| 26 | 27 | 28 | | | | |

| Sun | Mon | Tue | Wed | Thu | Fri | Sat |
|---------------|---------------|---------------|---------------|---------------|---------------|---------------|
| | | | 1 | 2 | 3 | 4 |
| 5 | 6 | 7 | 8 | 9 | 10 | 11 |
| 12 | 13 | 14 | 15 | 16 | 17 | 18 |
| 19 | 20 | 21 | 22 | 23 | 24 | 25 |
| 26 | 27 | 28 | | | | |

15 Use the circles to help answer the question.



Three out of every 4 people who were asked said that they would like to buy a new car. If 24 people said they would like to buy a new car, how many people were asked?
