

Making a Figure Zoo

Make a three-dimensional figure by cutting the large net below along the heavy lines and folding along the dashed lines. Then answer the questions about the figure.

1 How many faces does figure DD have?

_____ faces

2 How many faces have at least 2 lines of symmetry?

_____ faces

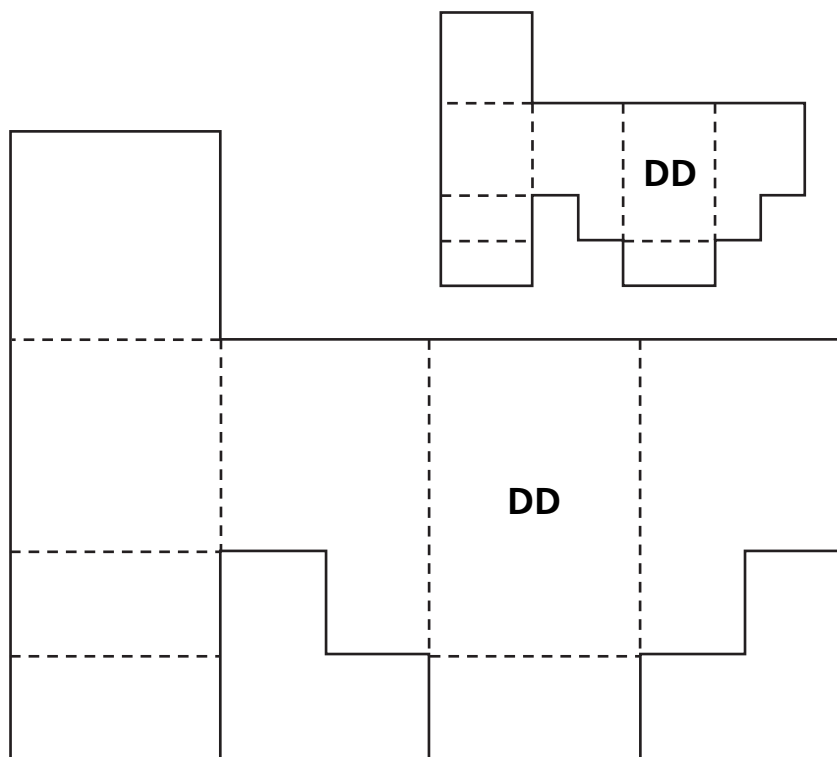
3 Is figure DD a pyramid?

Circle one: Yes No

4 Is figure DD a prism?

Circle one: Yes No

5 On the small copy of the net, shade two faces that are congruent and opposite each other on the figure.



© Education Development Center, Inc.