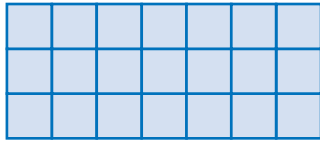


# Problem Solving Test Prep

Choose the correct answer.

- 1 Which numbers make a fact family shown by the array?



- A. 3, 7, 10      C. 3, 9, 27  
B. 3, 7, 21      D. 3, 8, 24

- 2 The numbers on the cube below are counting numbers, starting with 1. Rita tosses the cube one time. Which list shows all possible outcomes?

- A. 1, 3, 5  
B. 1, 3, 5, 6  
C. 1, 2, 3, 4, 5  
D. 1, 2, 3, 4, 5, 6



- 3 Which pair of numbers would NOT make a true number sentence?

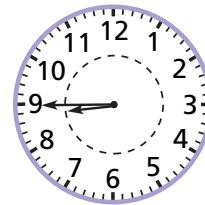
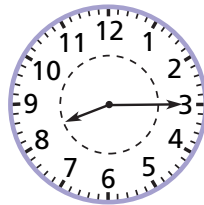
$$\blacksquare + \blacktriangle = 23$$

- A. 12, 13      C. 14, 9  
B. 11, 12      D. 15, 8

- 4 The clocks let you find how long it takes Lia to get to school. What fraction of an hour does it take her to get to school?

Leaves home

Arrives at school



- A.  $\frac{1}{4}$       C.  $\frac{2}{3}$   
B.  $\frac{1}{2}$       D.  $\frac{3}{4}$

## Show What You Know

Solve the problem. Explain your answer.

- 5 Use the graph at right. How many students were absent on Monday? Explain.

---



---



---

STUDENTS ABSENT ON MONDAY	
Fifth grade	
Fourth grade	
Third grade	

Key: Each = 3 students.