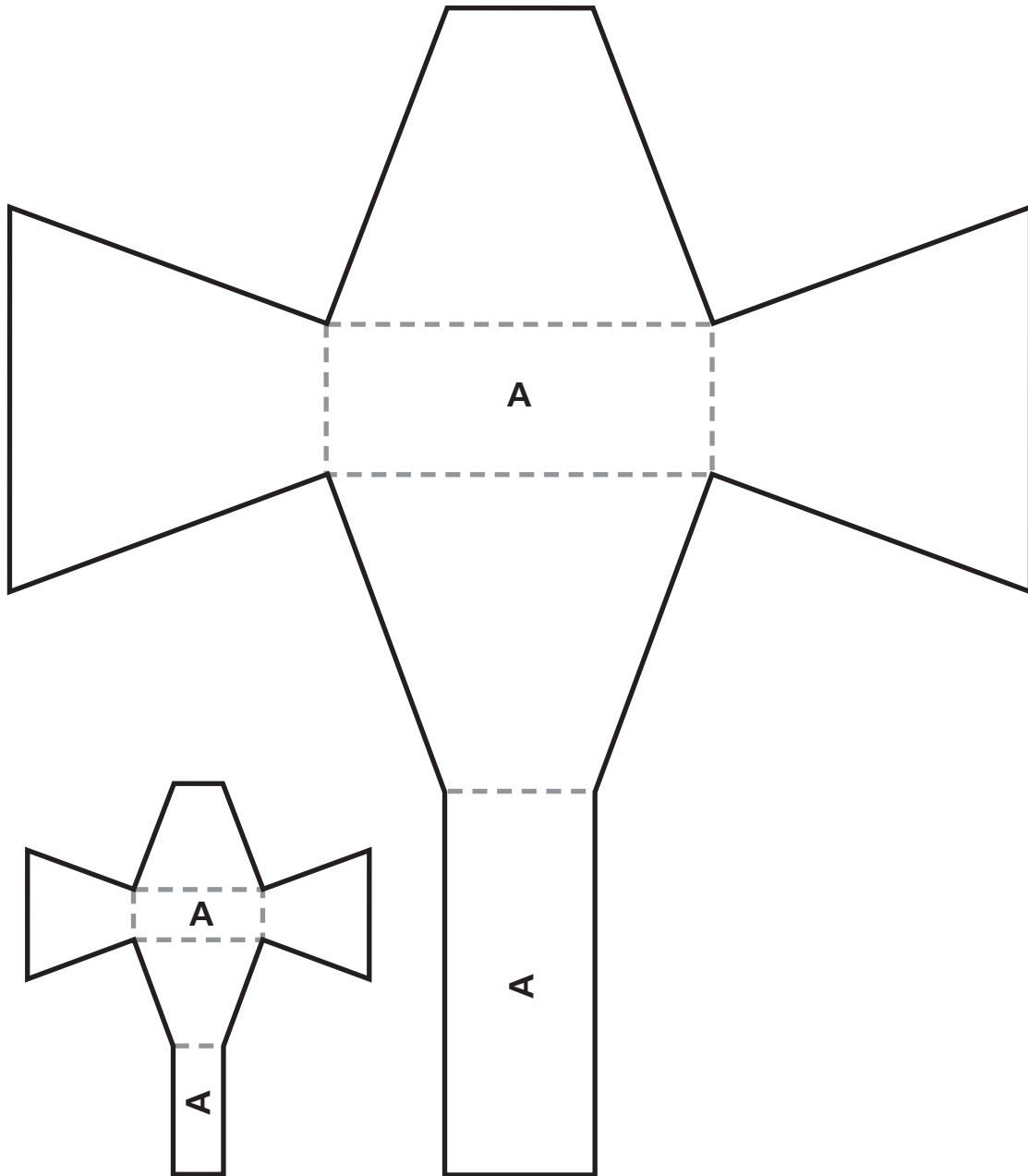


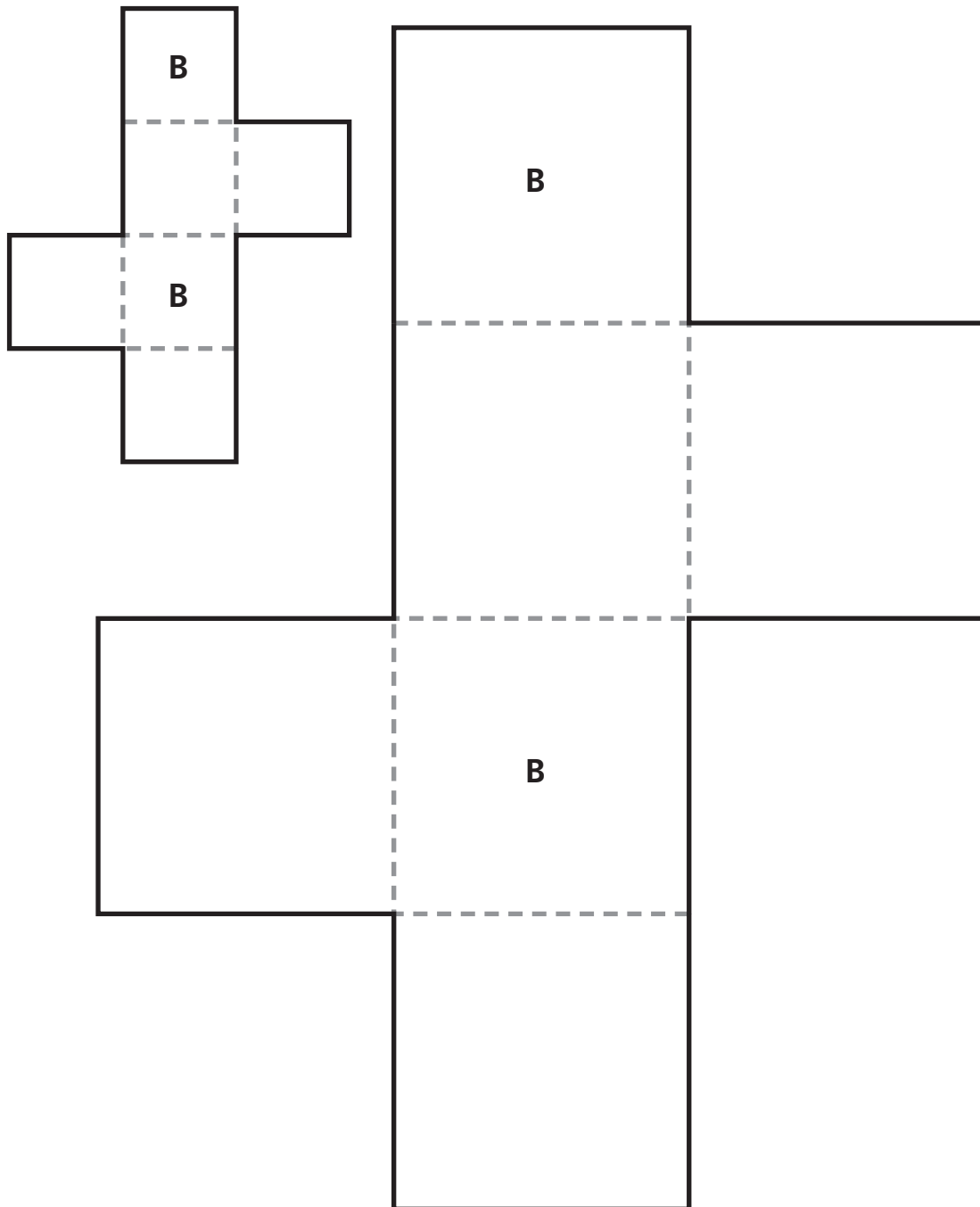
# Net A

**Cut along the solid lines. Fold along the dashed lines.**



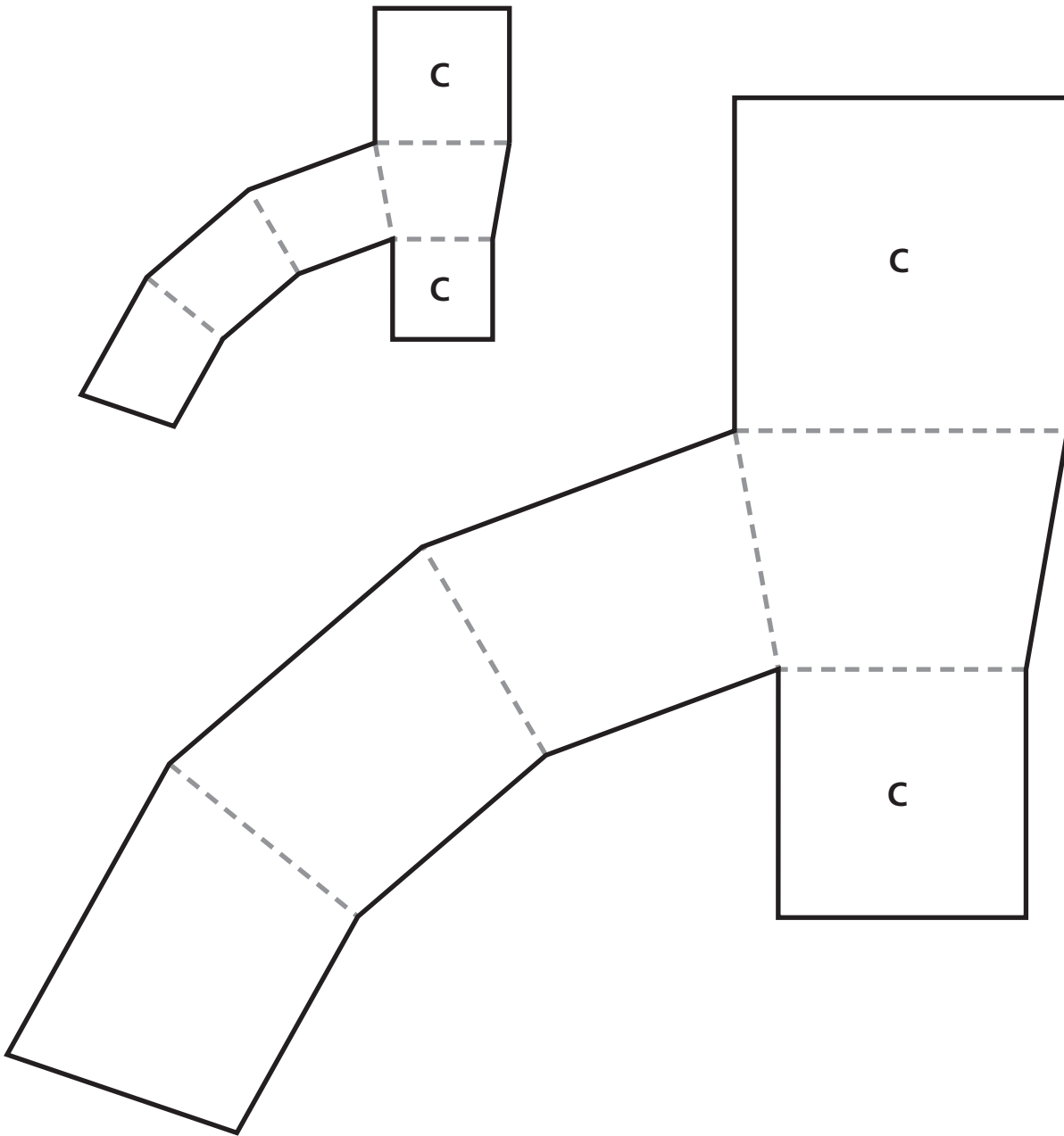
# Net B

**Cut along the solid lines. Fold along the dashed lines.**



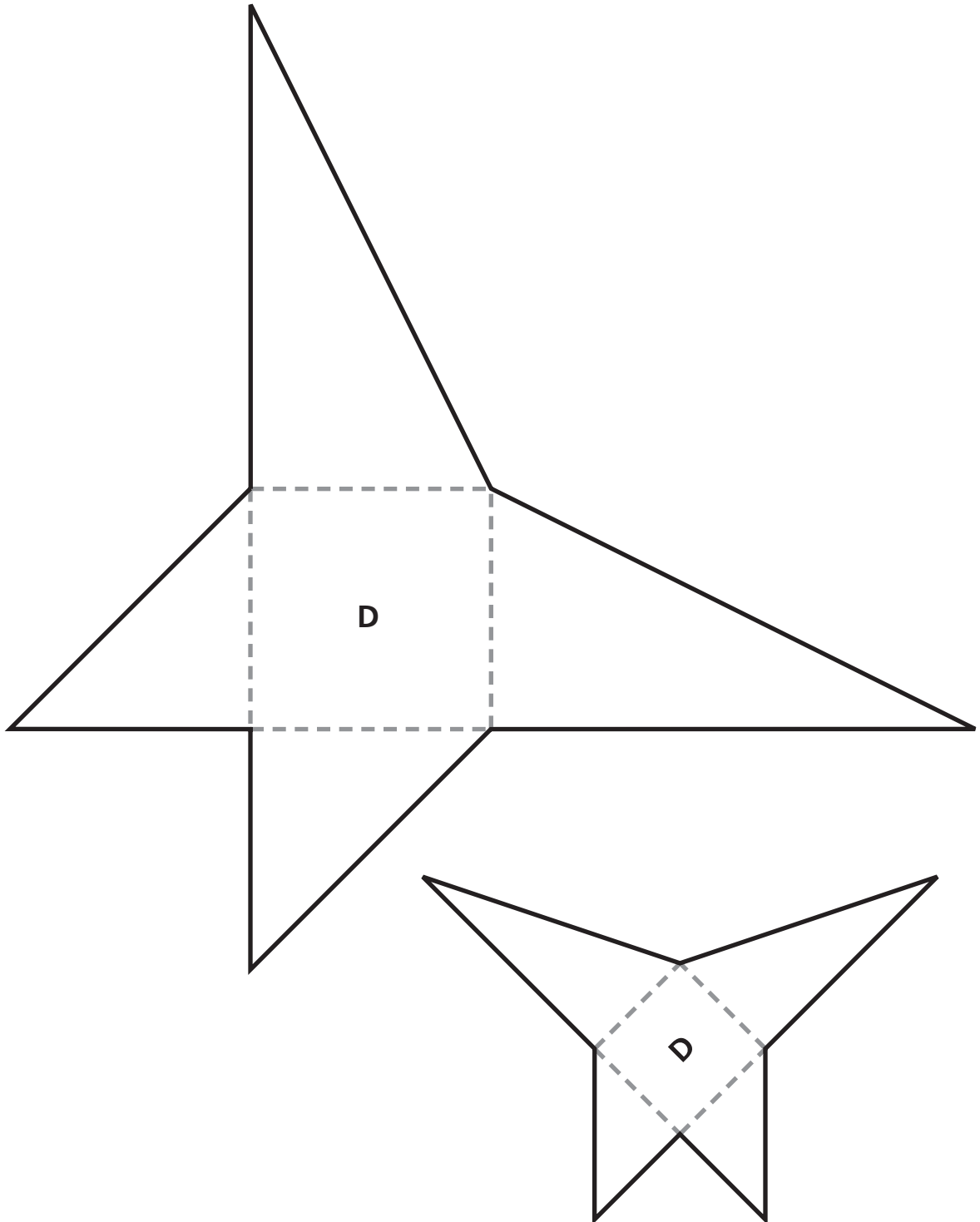
# Net C

Cut along the solid lines. Fold along the dashed lines.



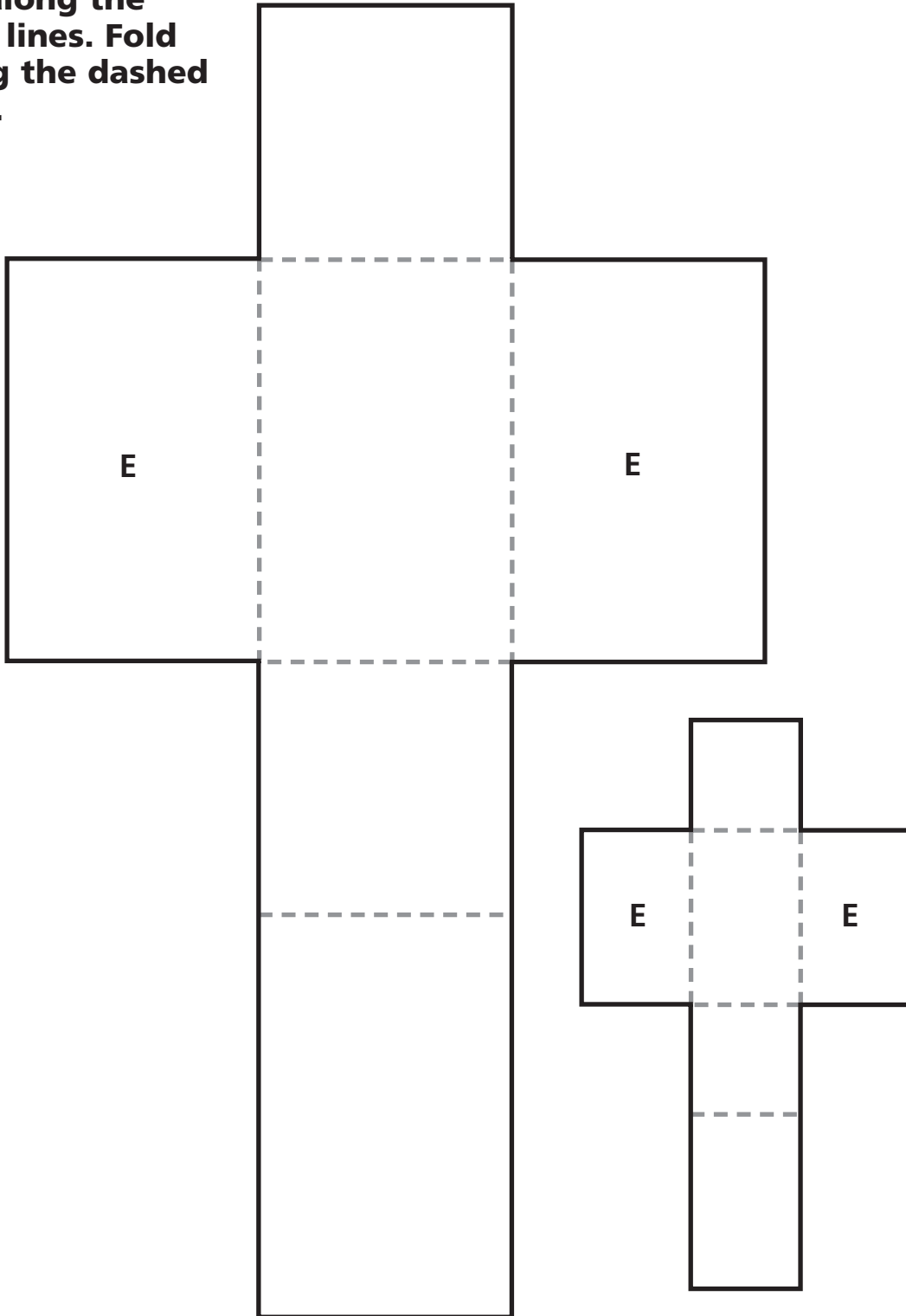
# Net D

Cut along the solid lines. Fold along the dashed lines.



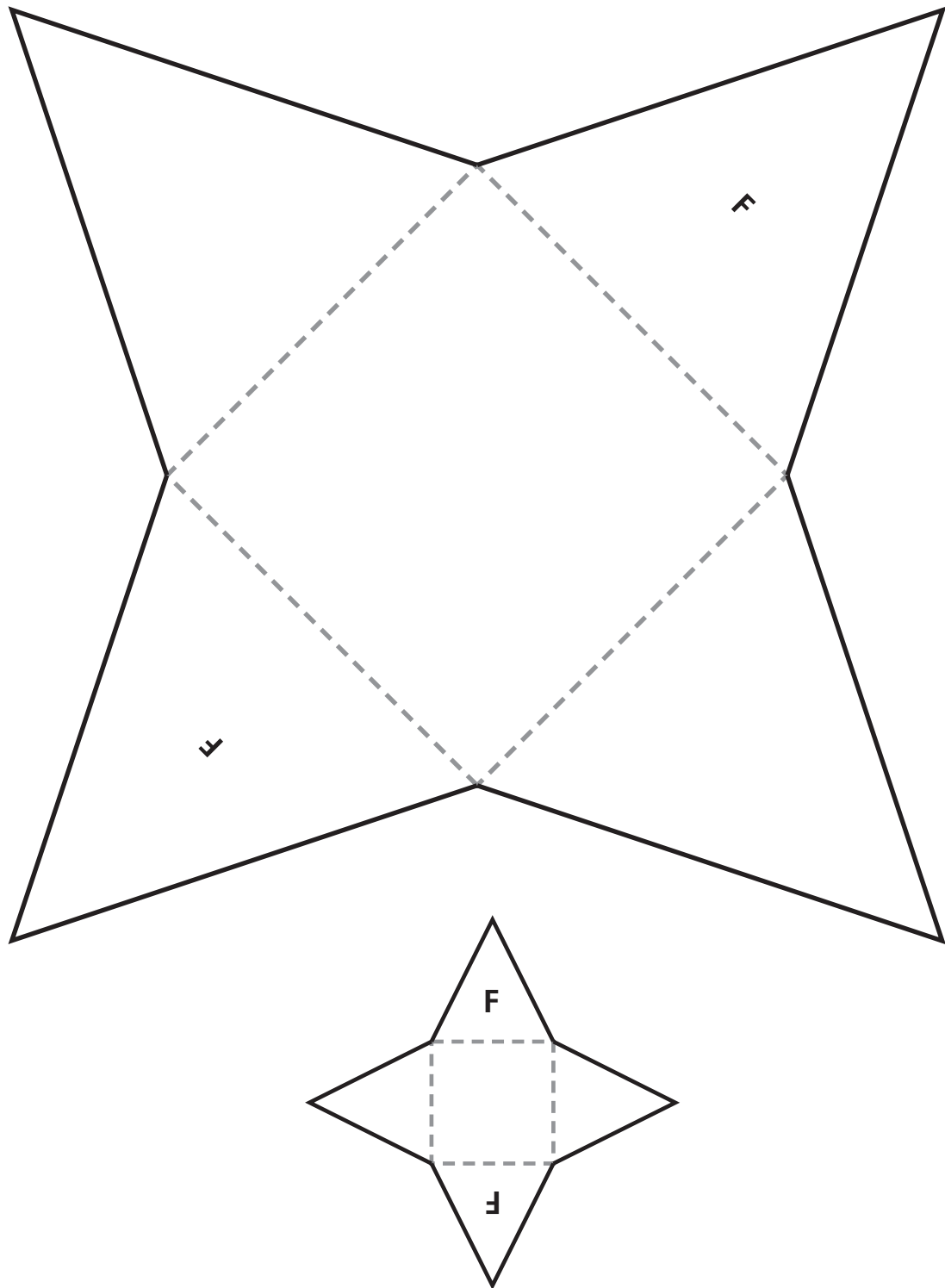
# Net E

**Cut along the solid lines. Fold along the dashed lines.**



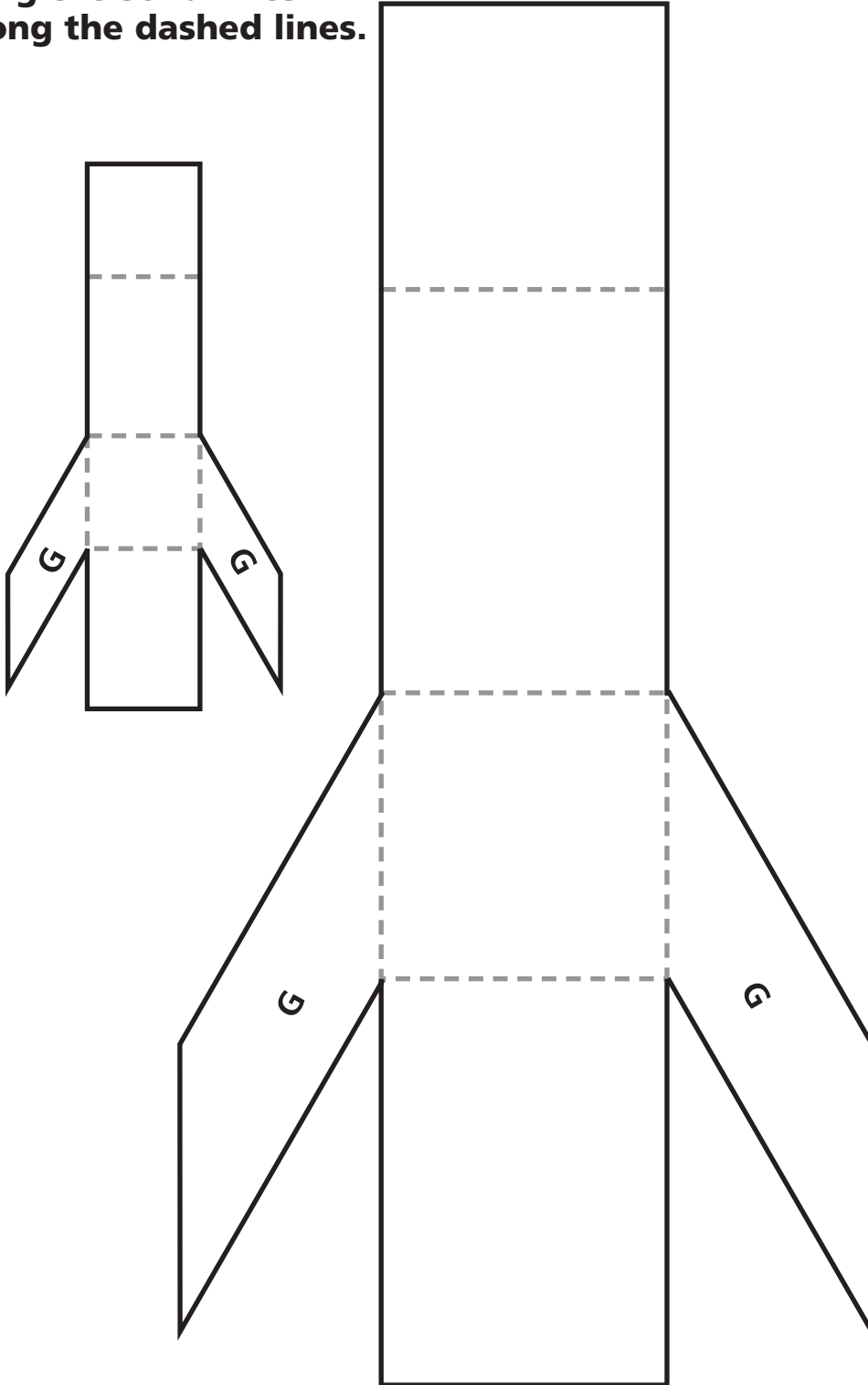
# Net F

Cut along the solid lines. Fold along the dashed lines.



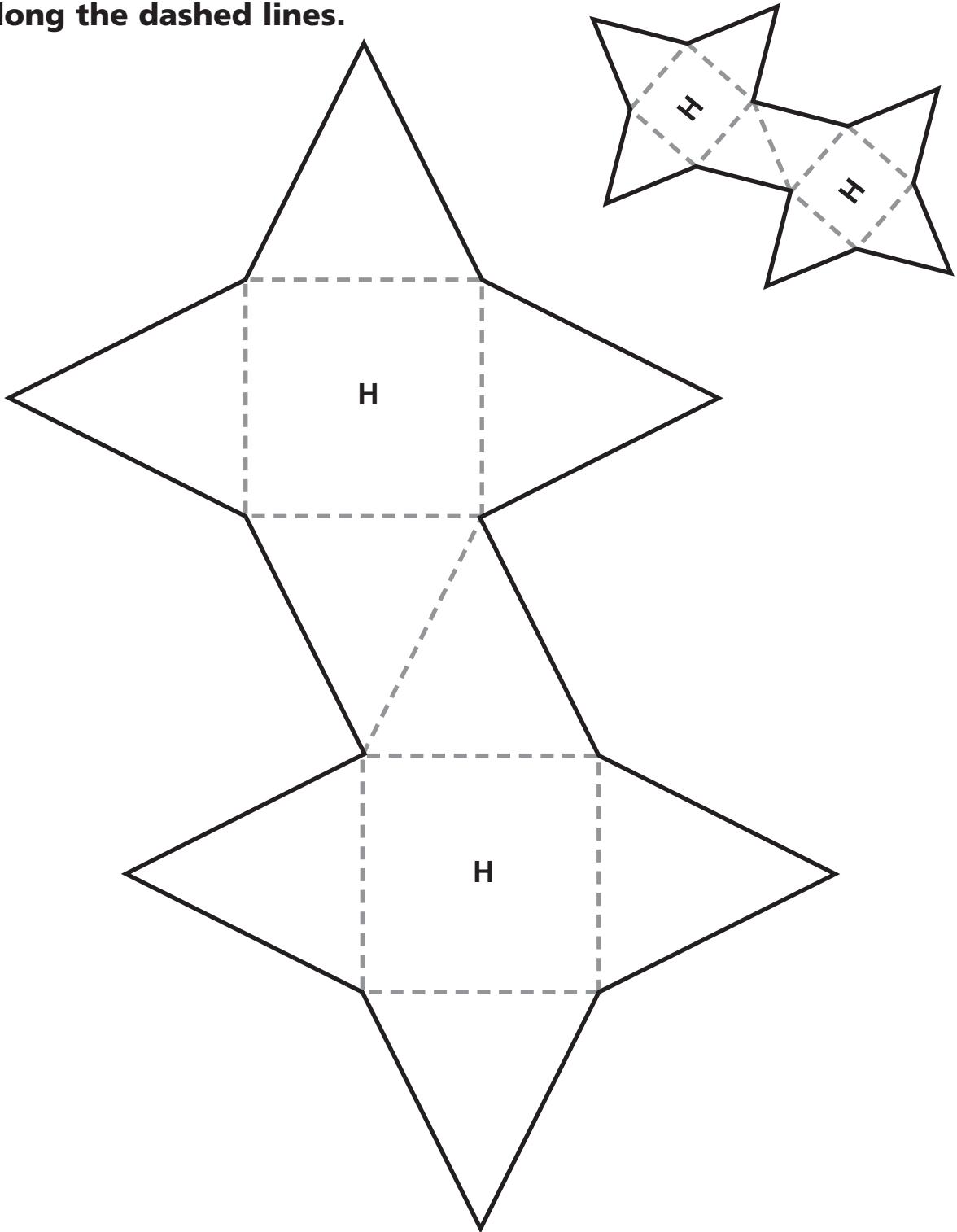
# Net G

**Cut along the solid lines.  
Fold along the dashed lines.**



# Net H

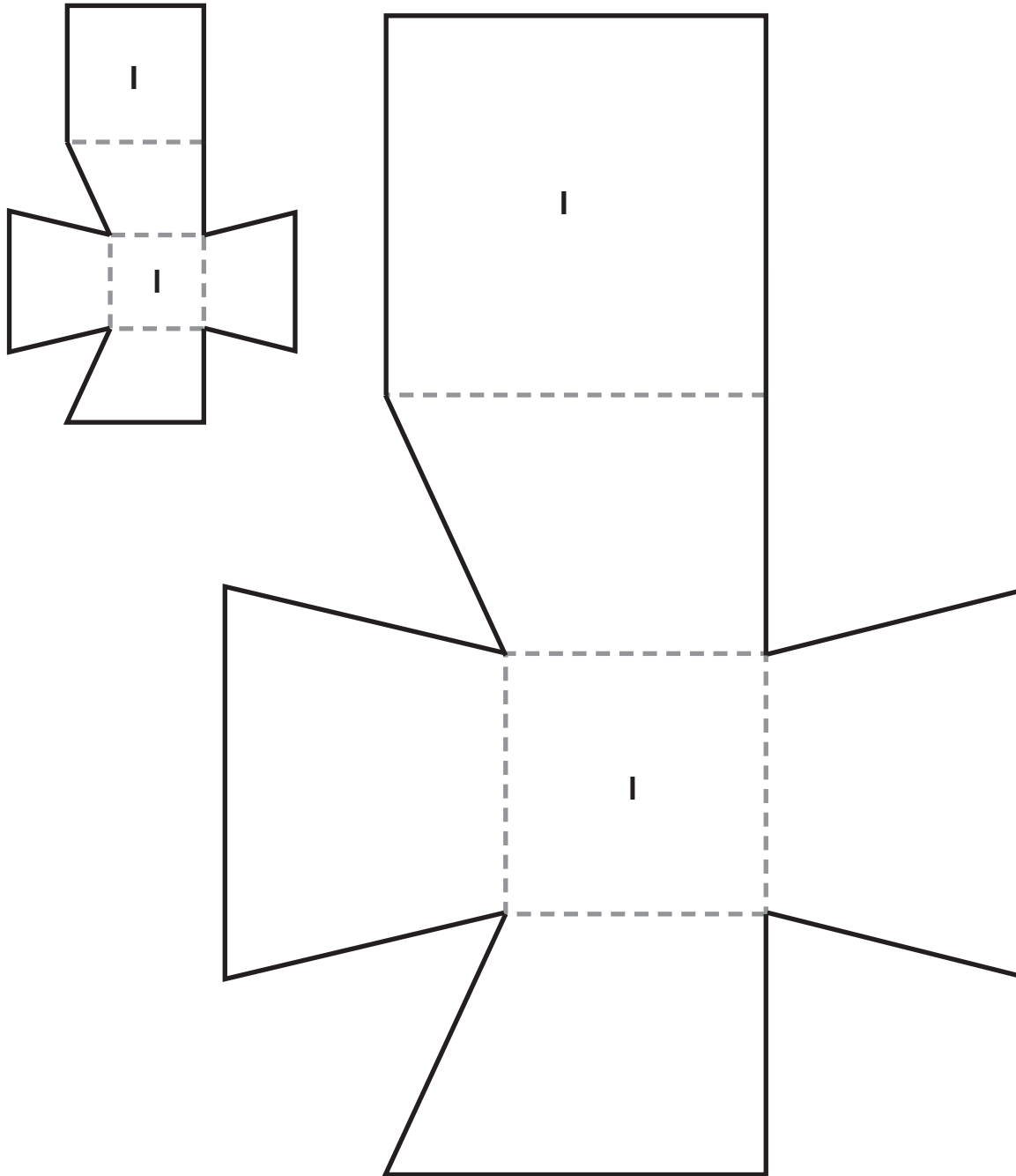
Cut along the solid lines. Fold along the dashed lines.





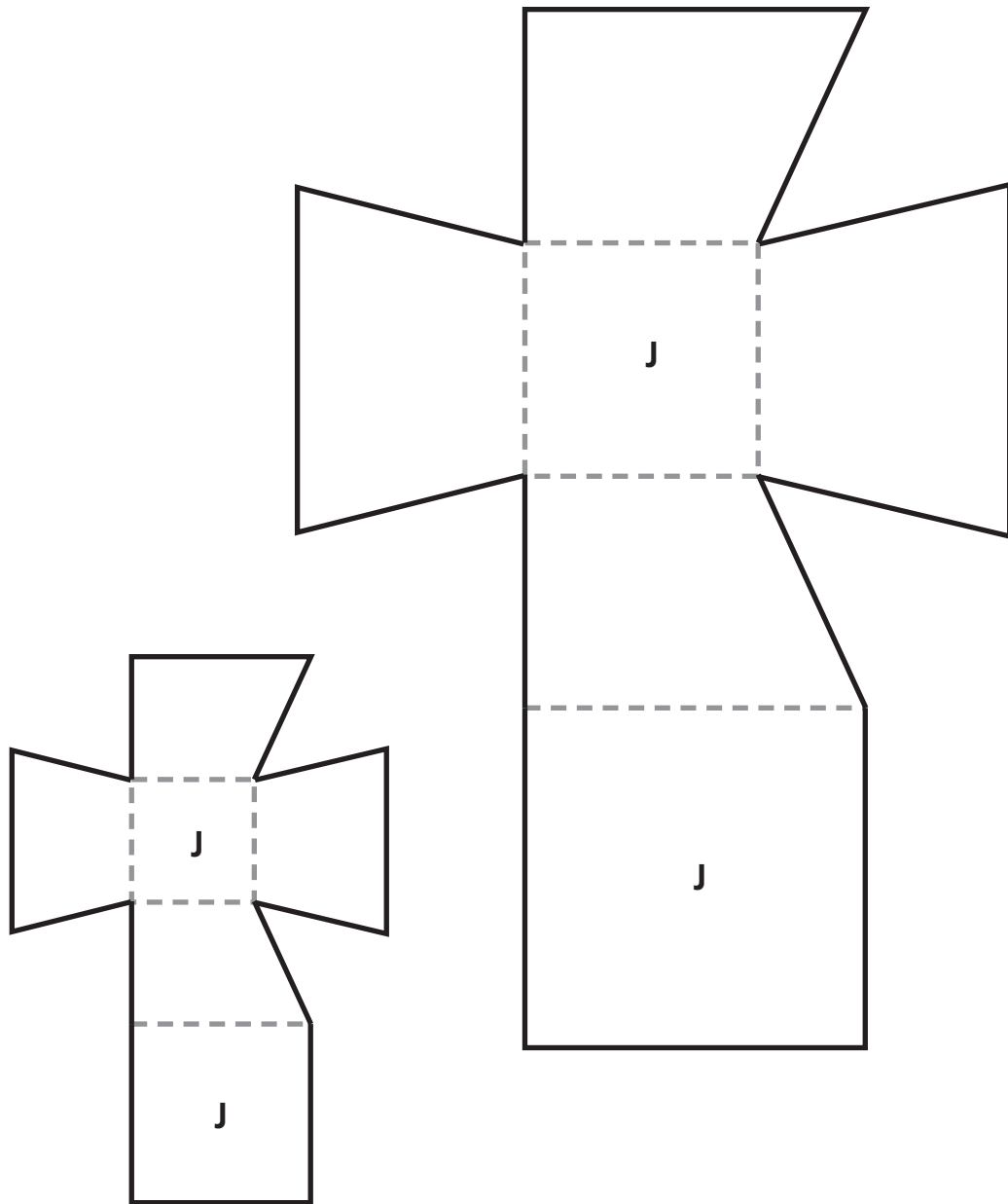
# Net I

**Cut along the solid lines. Fold along the dashed lines.**



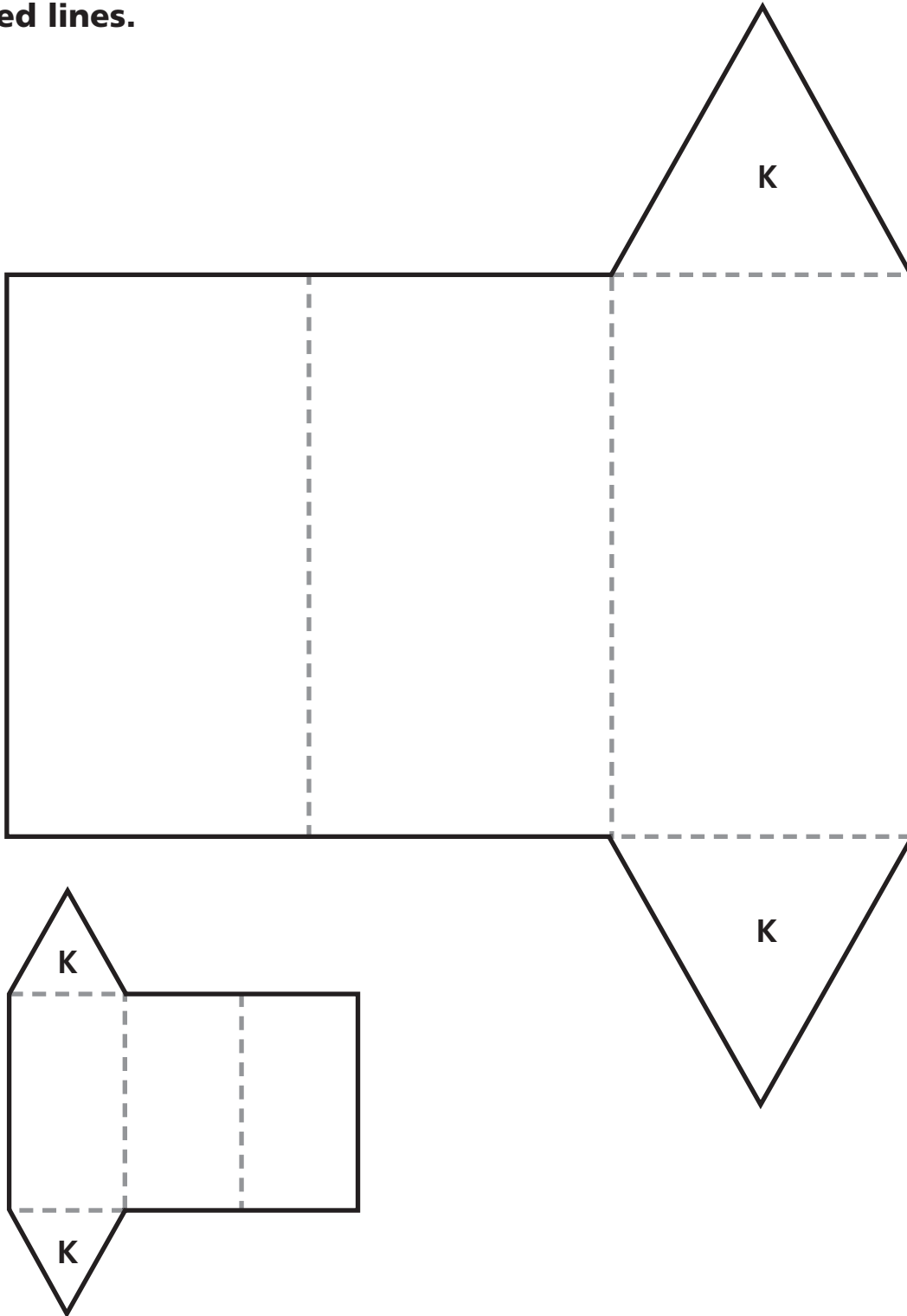
# Net J

**Cut along the solid lines. Fold along the dashed lines.**



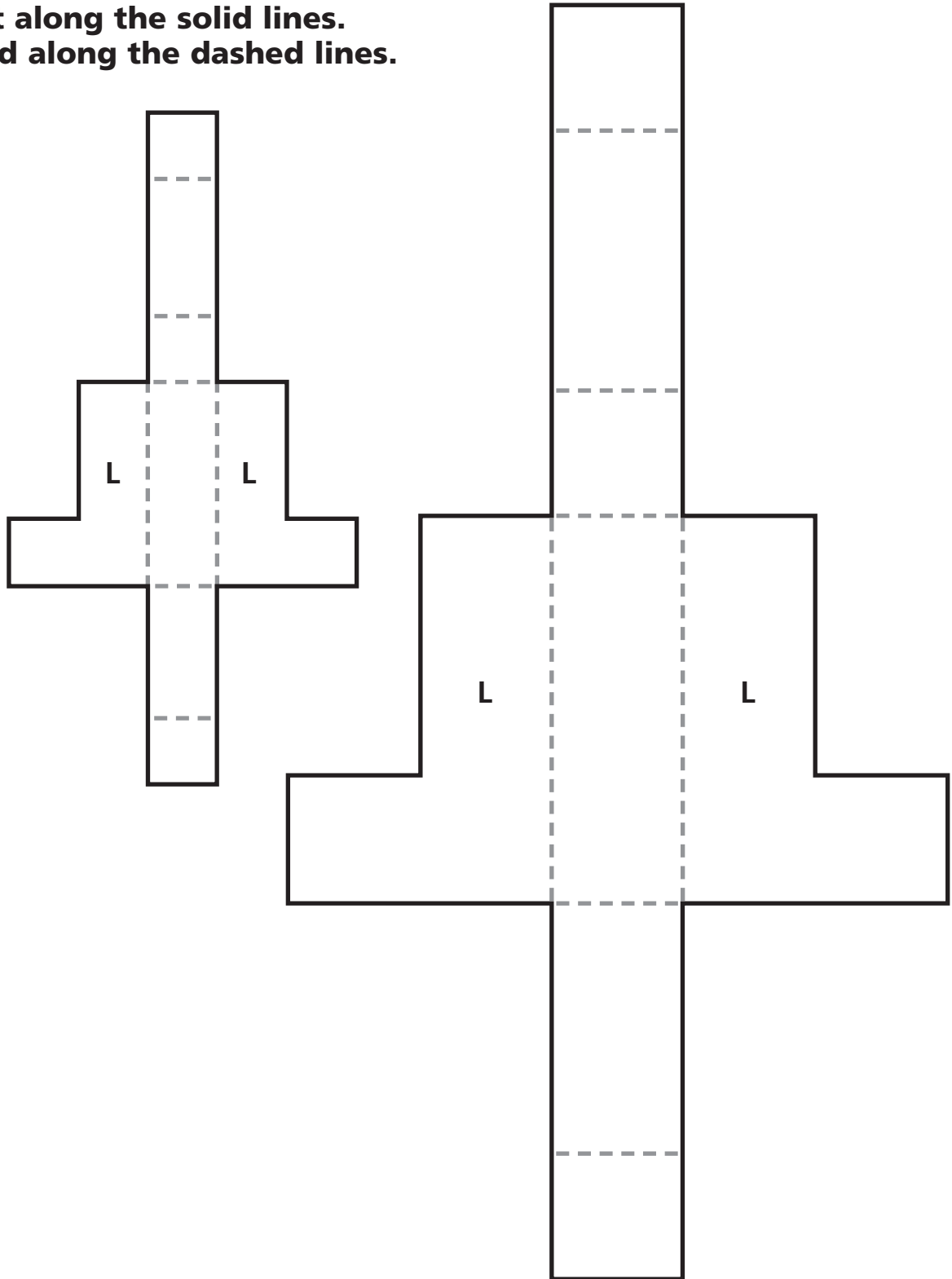
# Net K

**Cut along the solid lines. Fold along the dashed lines.**



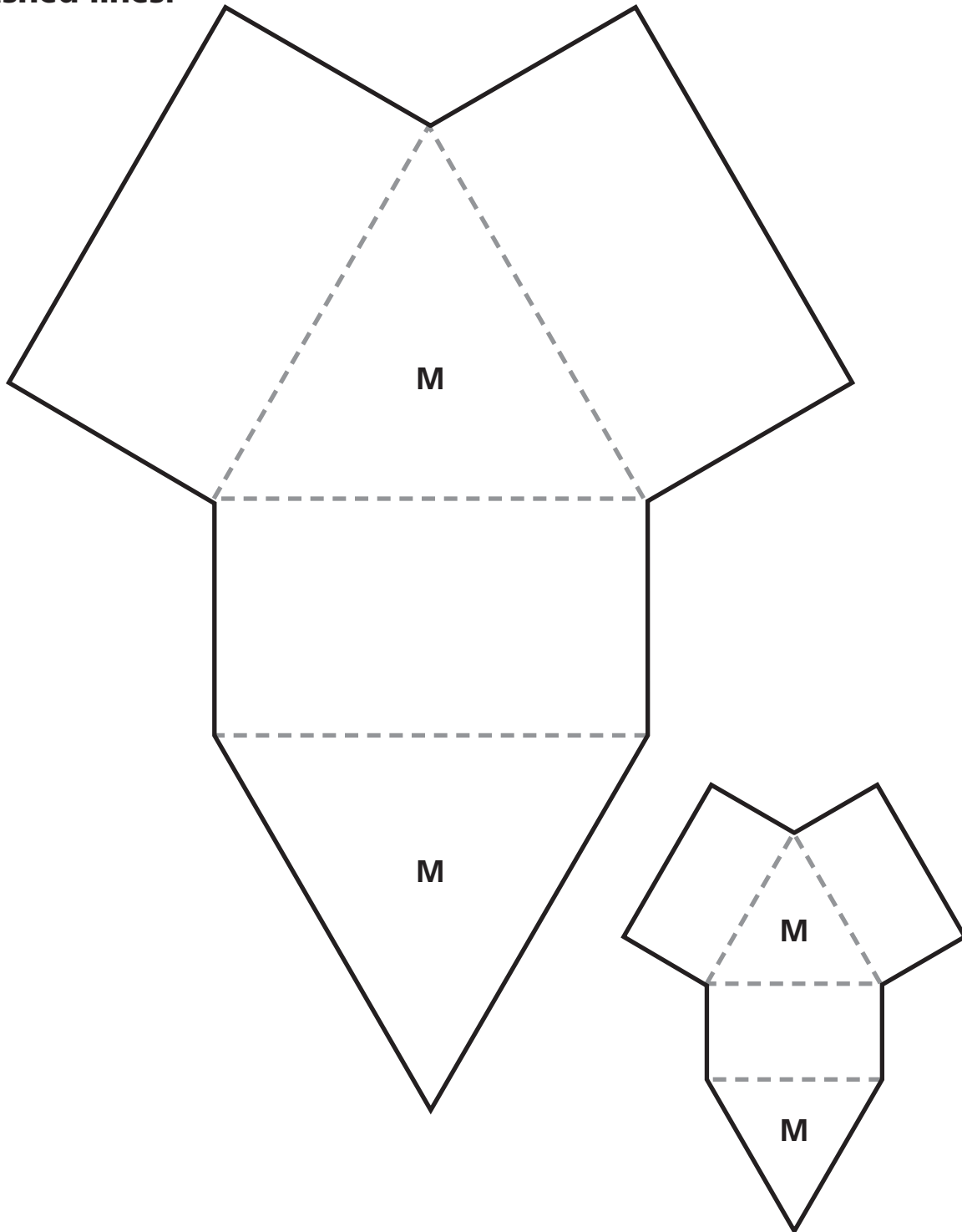
# Net L

**Cut along the solid lines.  
Fold along the dashed lines.**



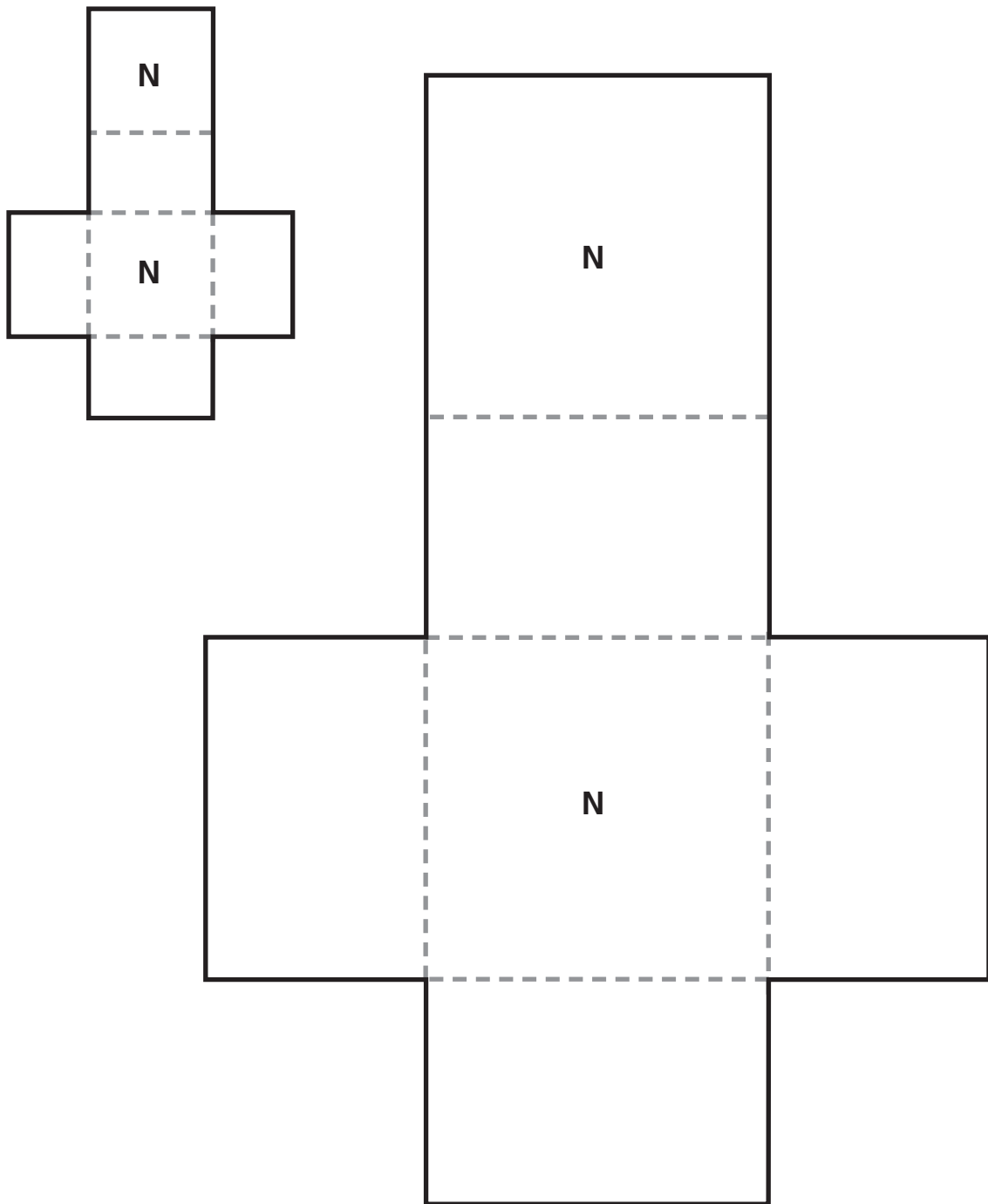
# Net M

**Cut along the solid lines. Fold along the dashed lines.**



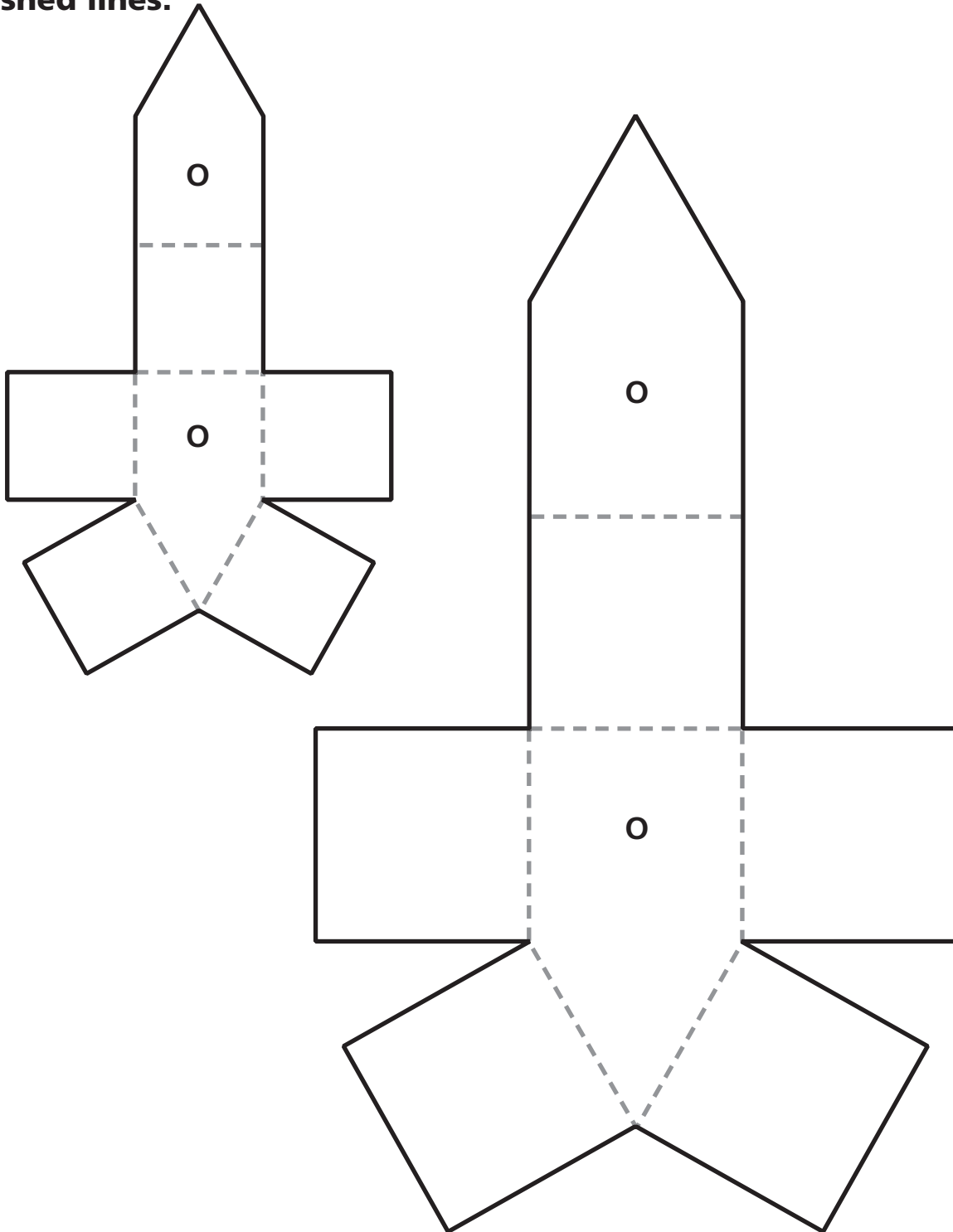
# Net N

**Cut along the solid lines. Fold along the dashed lines.**



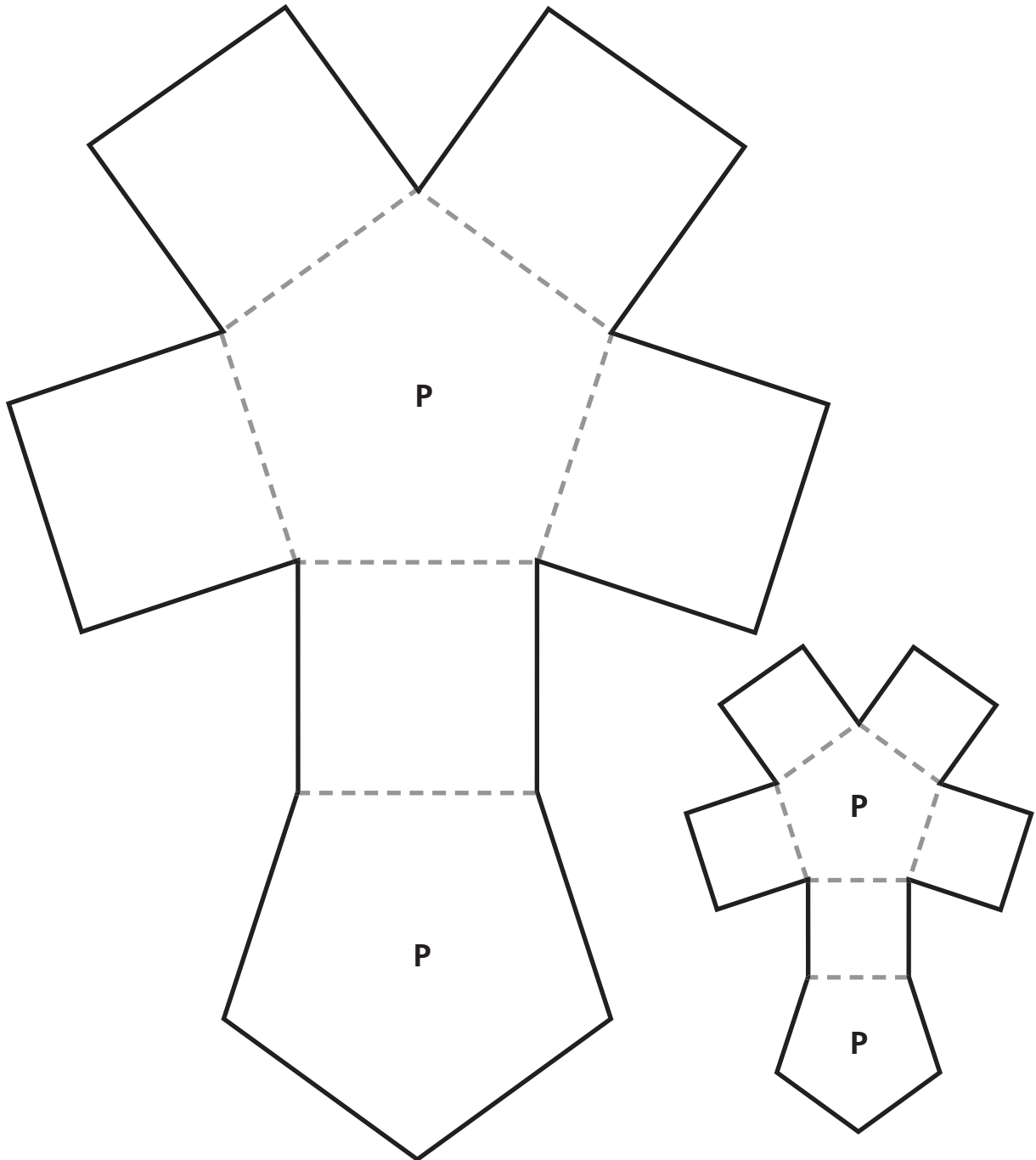
# Net O

Cut along the solid lines. Fold along the dashed lines.



# Net P

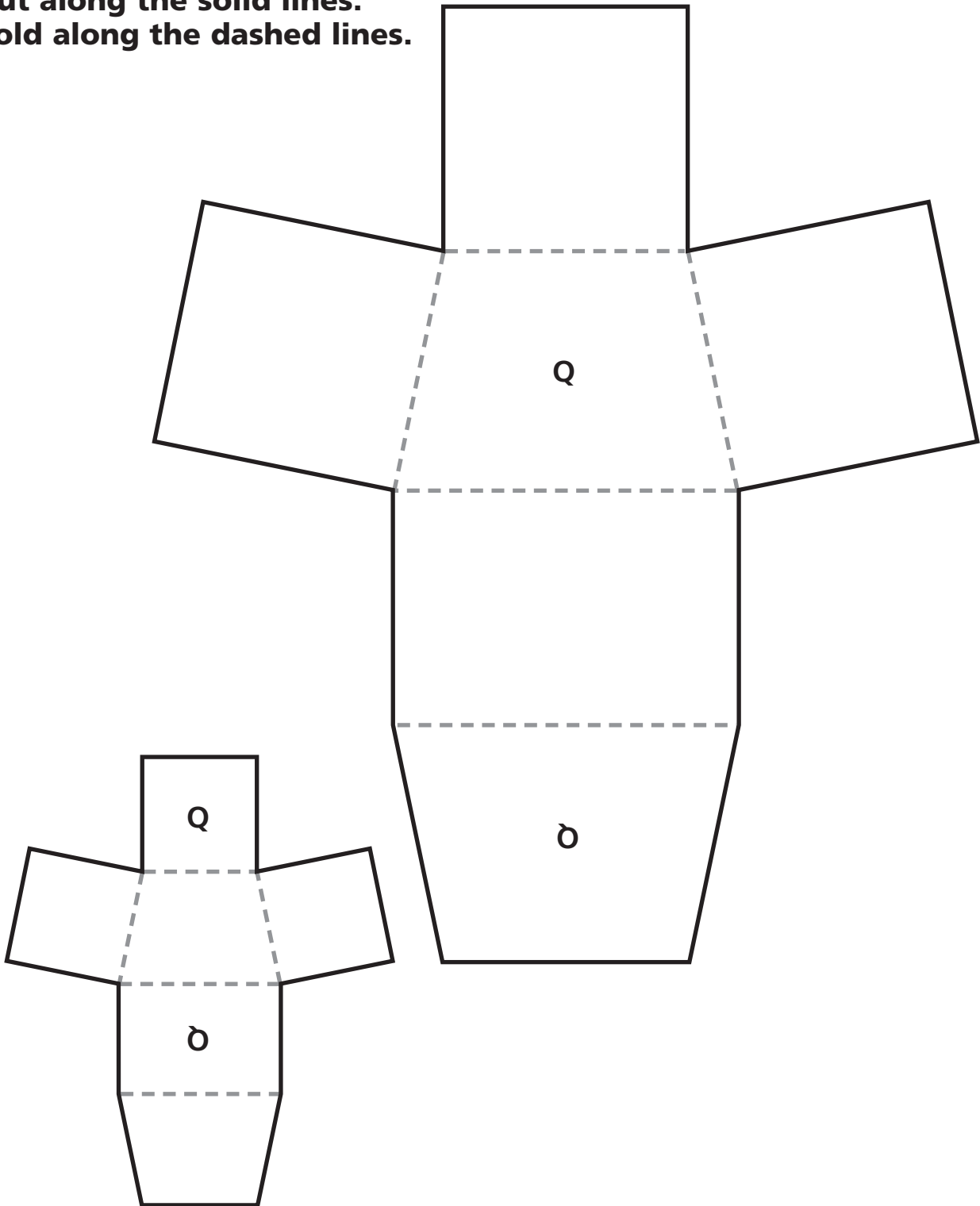
**Cut along the solid lines. Fold along the dashed lines.**





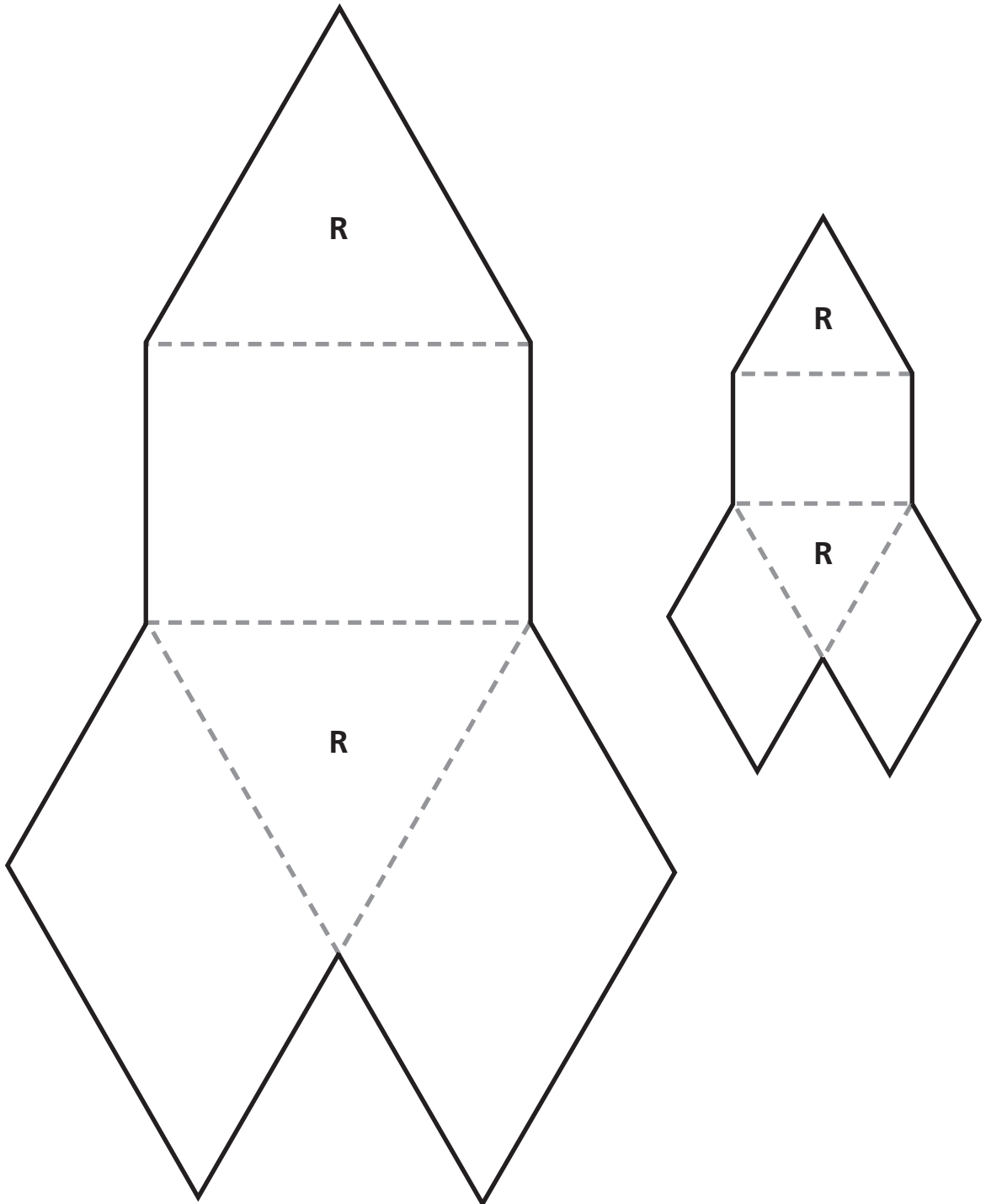
# Net Q

Cut along the solid lines.  
Fold along the dashed lines.



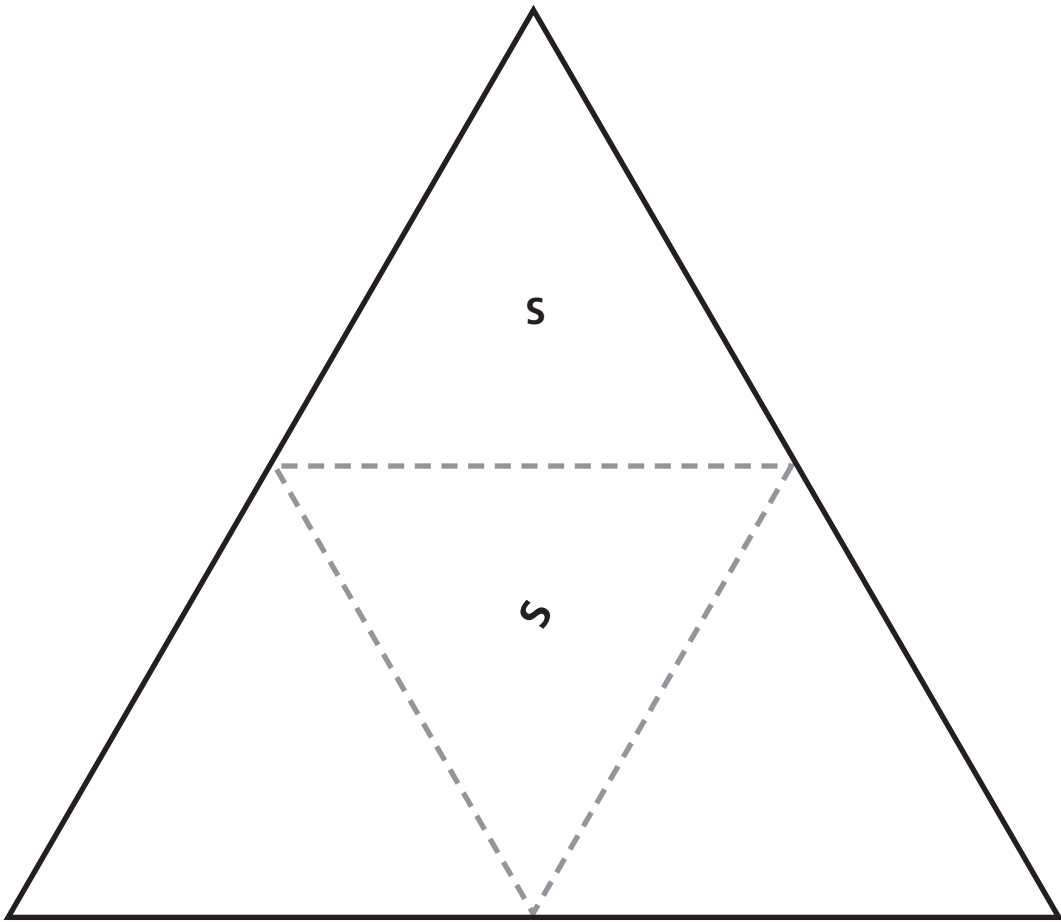
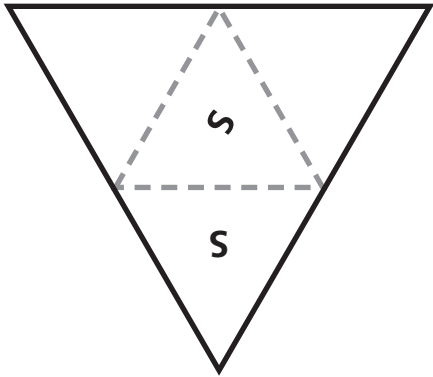
# Net R

Cut along the solid lines. Fold along the dashed lines.



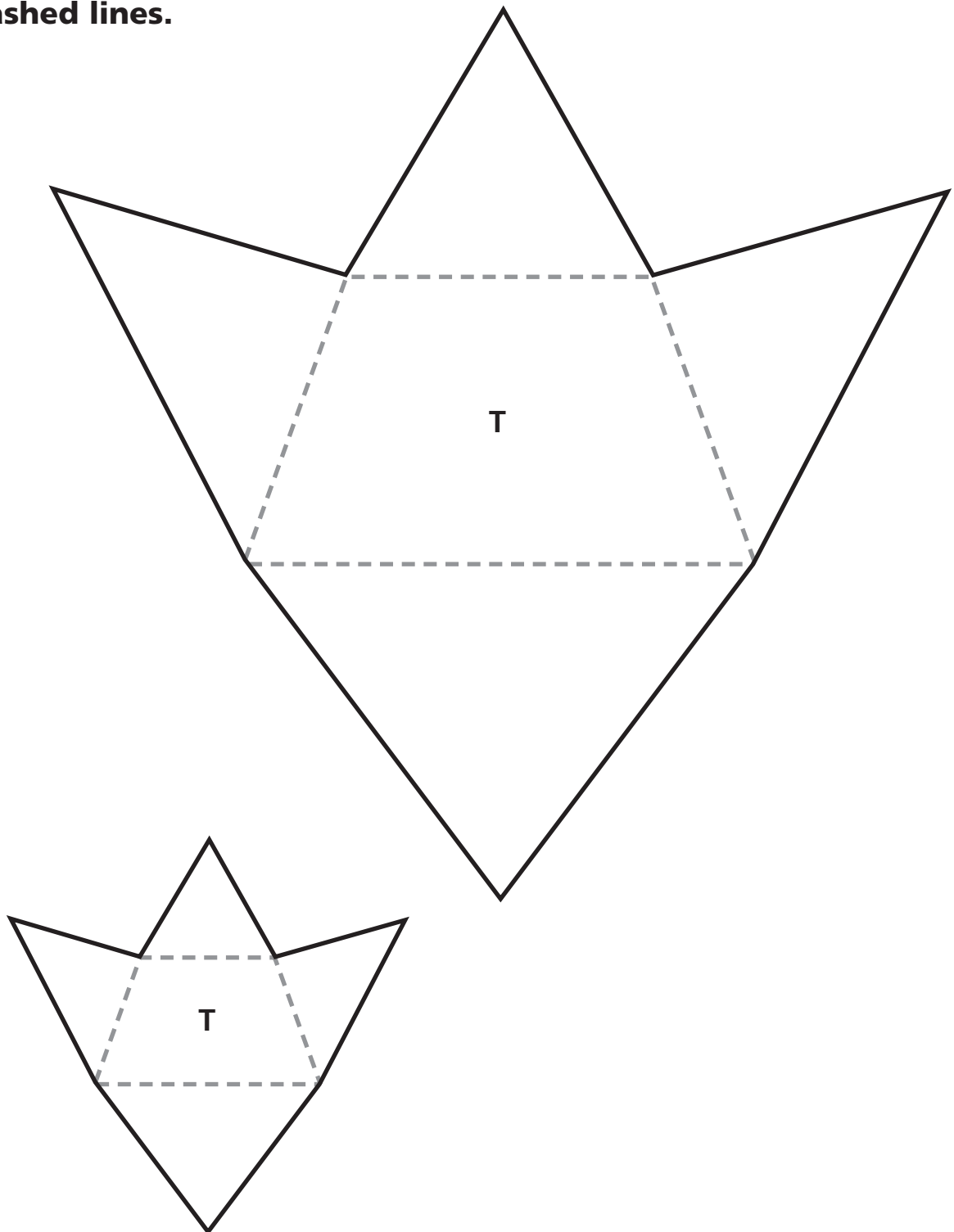
# Net S

**Cut along the solid lines. Fold along the dashed lines.**



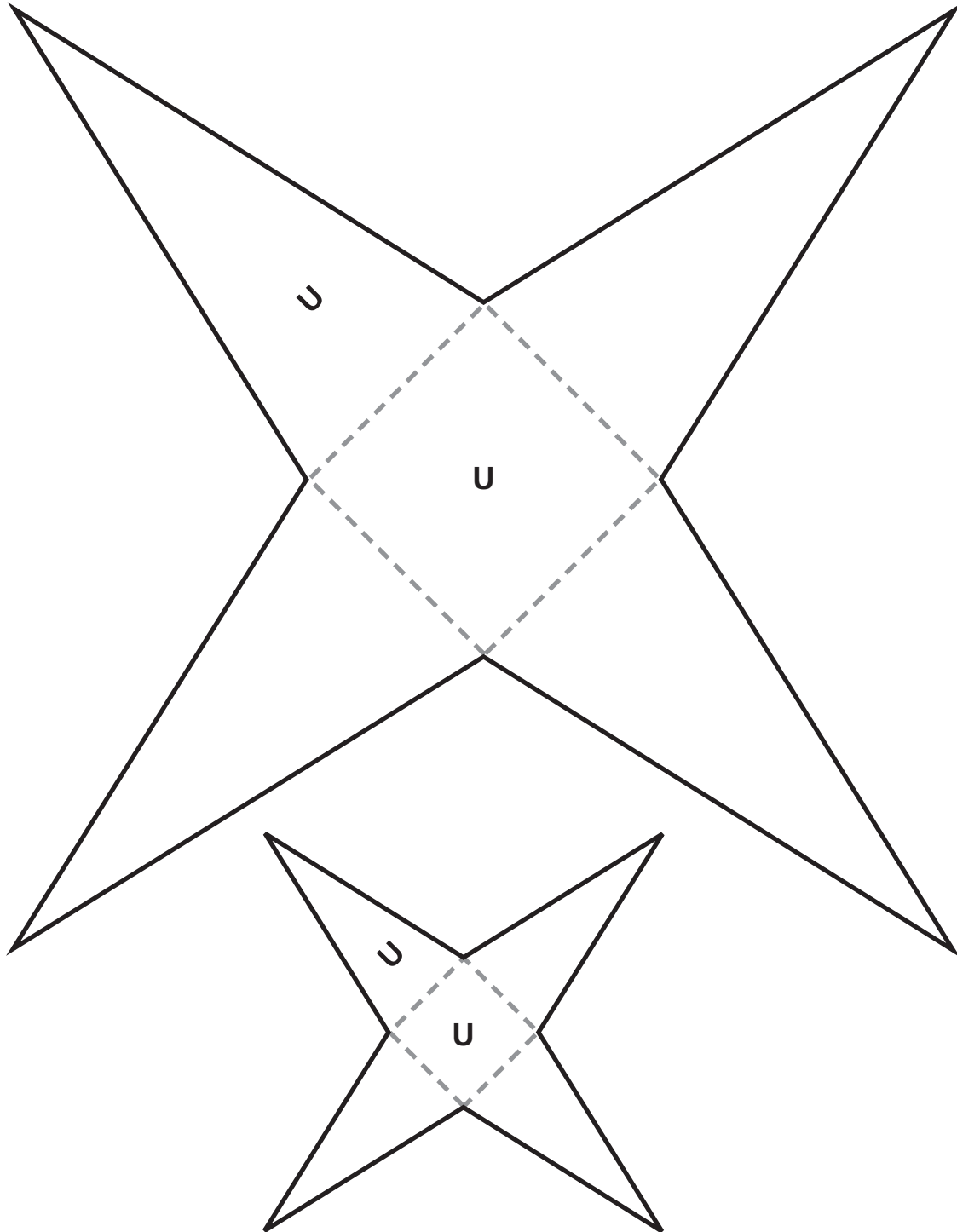
# Net T

Cut along the solid lines. Fold along the dashed lines.



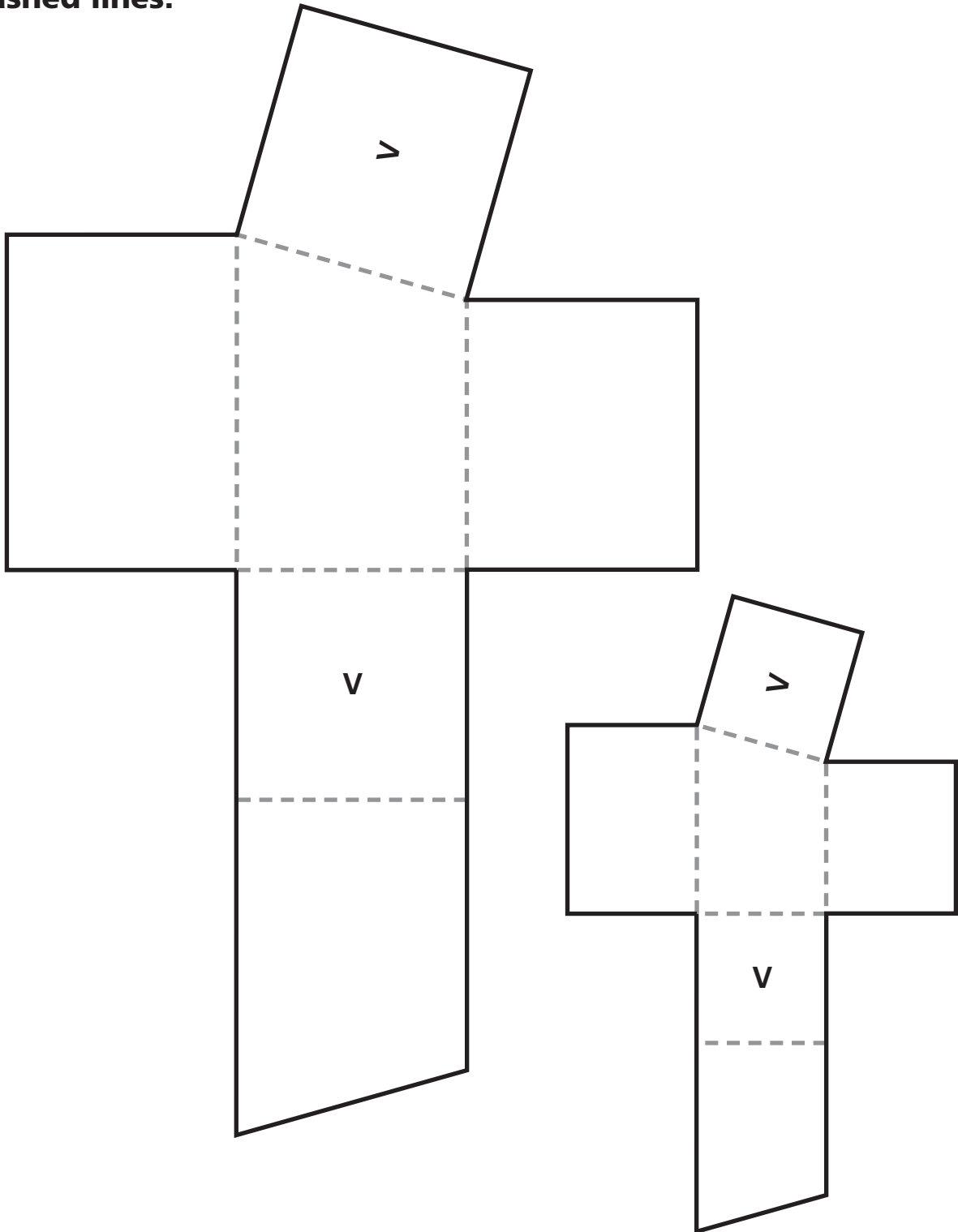
# Net U

Cut along the solid lines. Fold along the dashed lines.



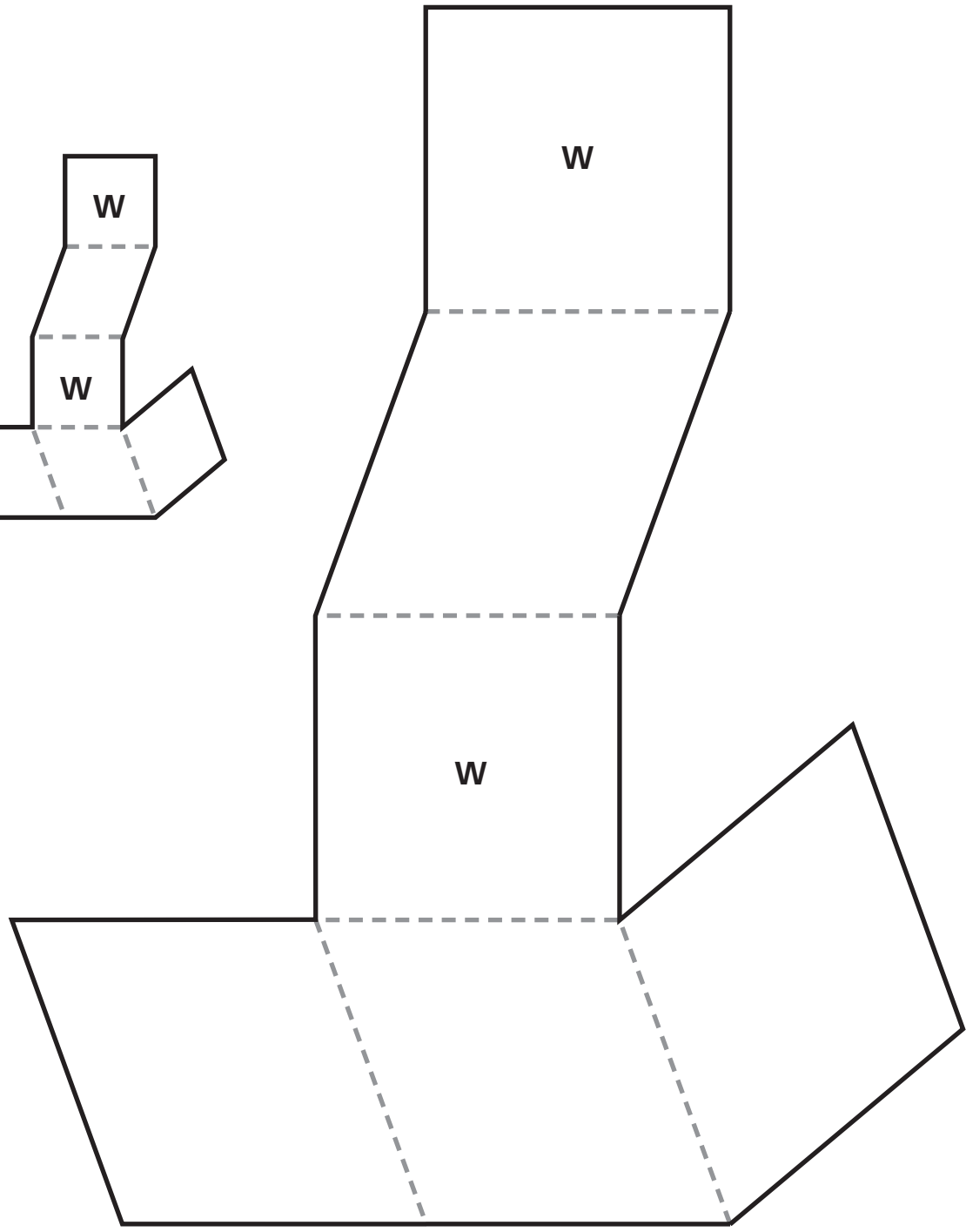
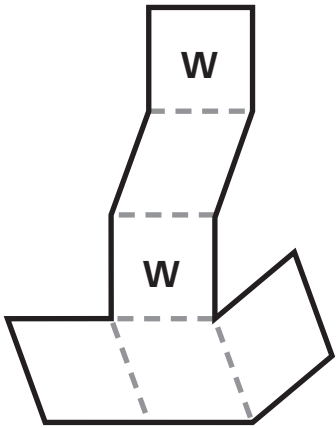
# Net V

Cut along the solid lines. Fold along the dashed lines.



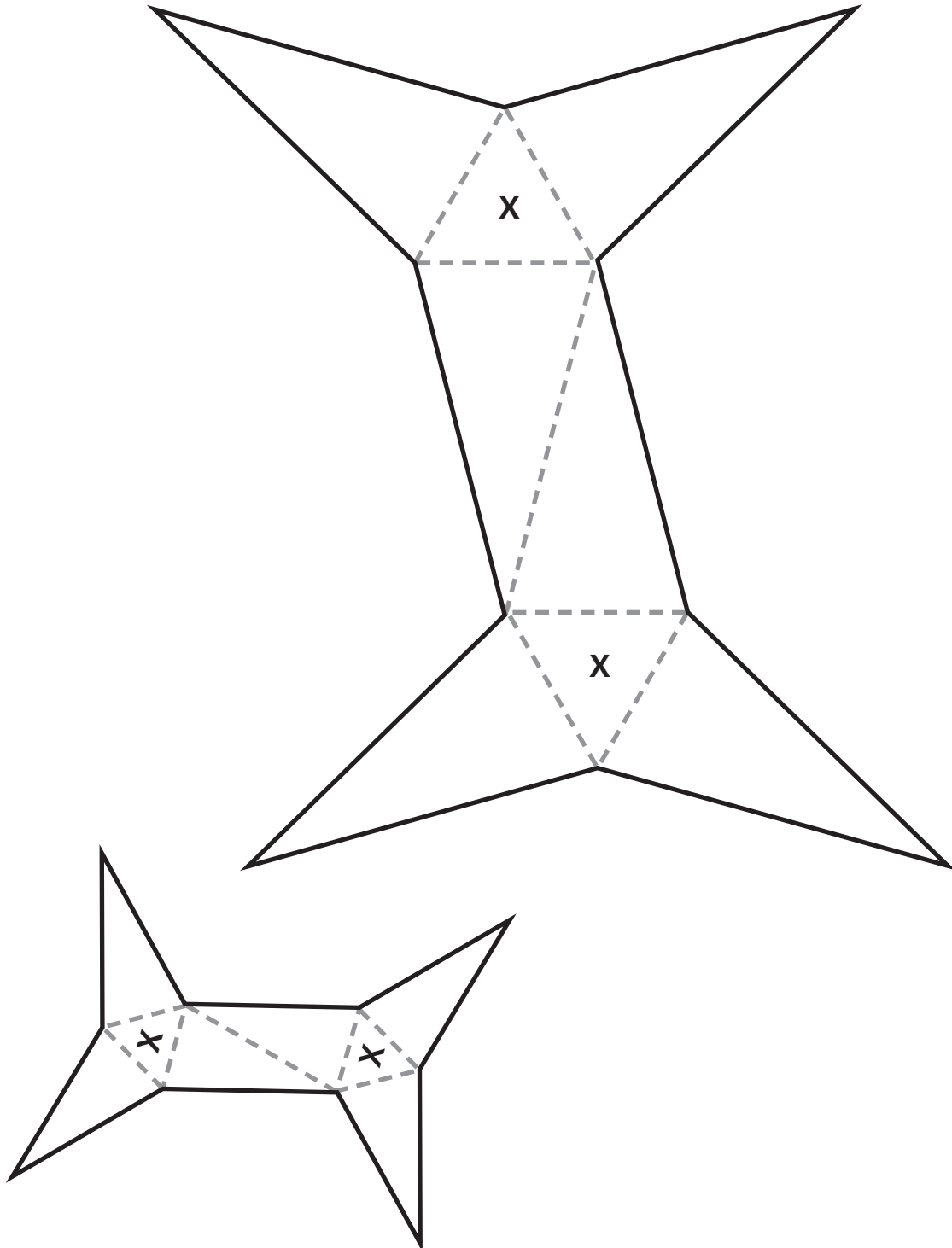
# Net W

**Cut along the solid lines. Fold along the dashed lines.**



# Net X

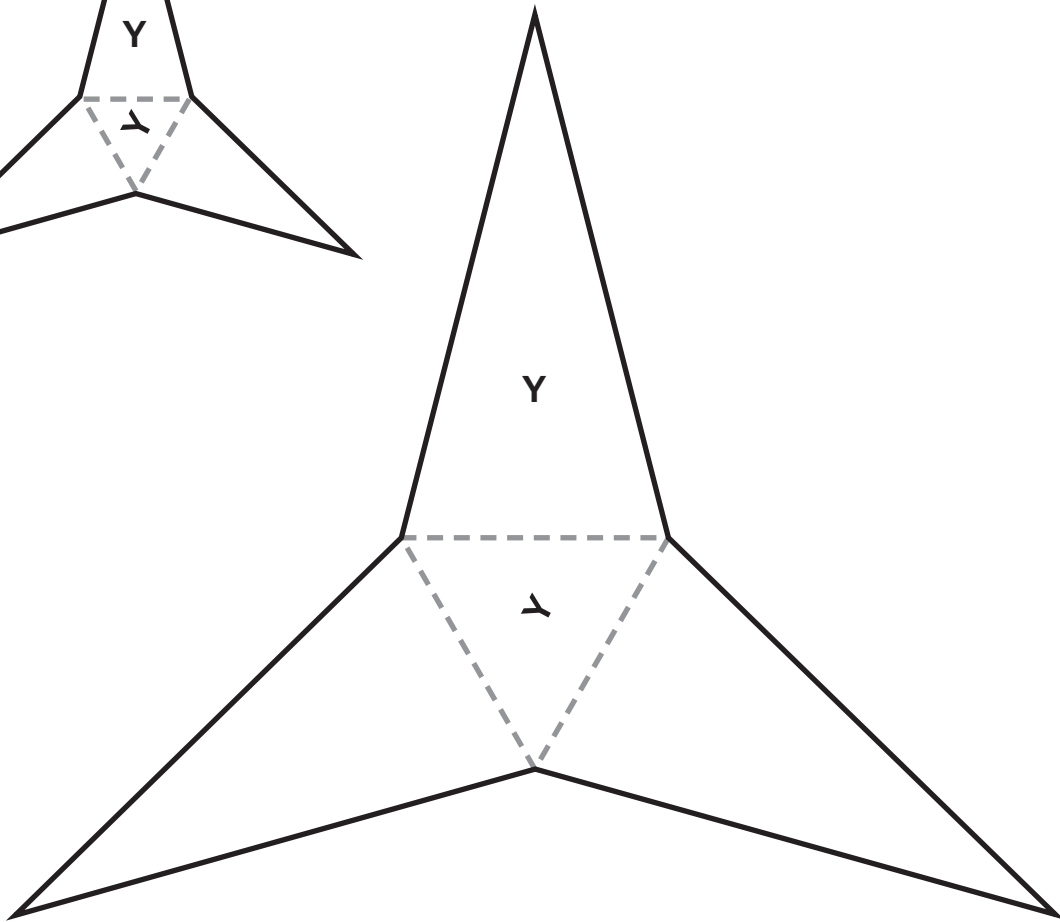
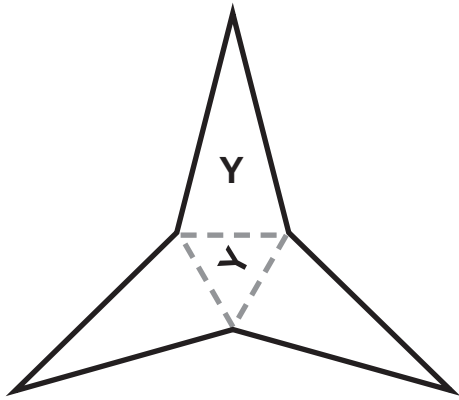
**Cut along the solid lines. Fold along the dashed lines.**





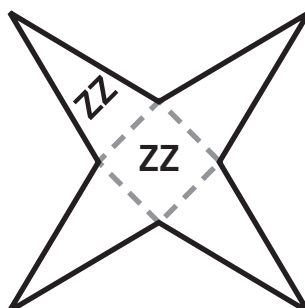
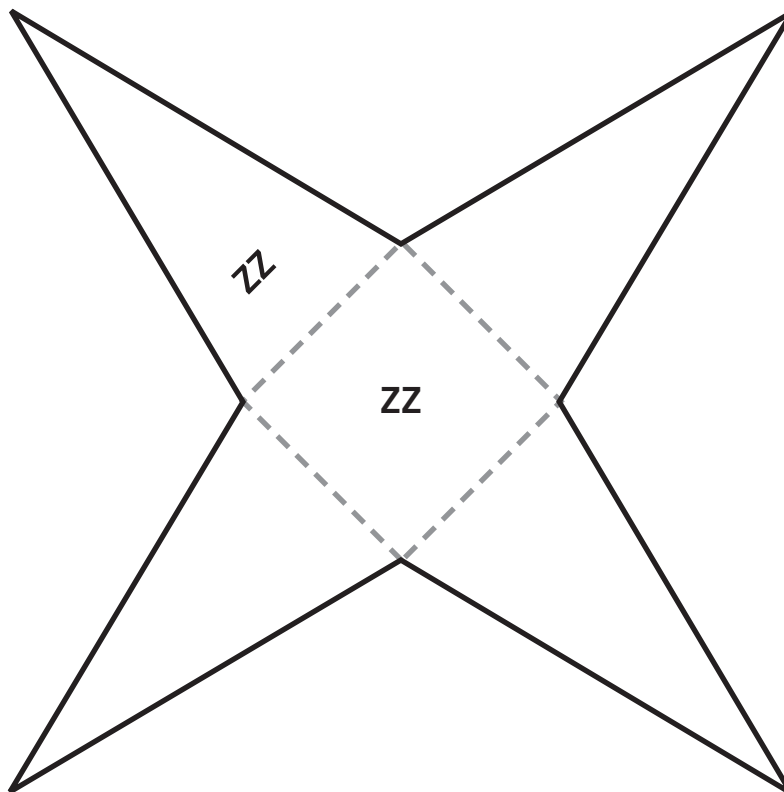
# Net Y

**Cut along the solid lines. Fold along the dashed lines.**



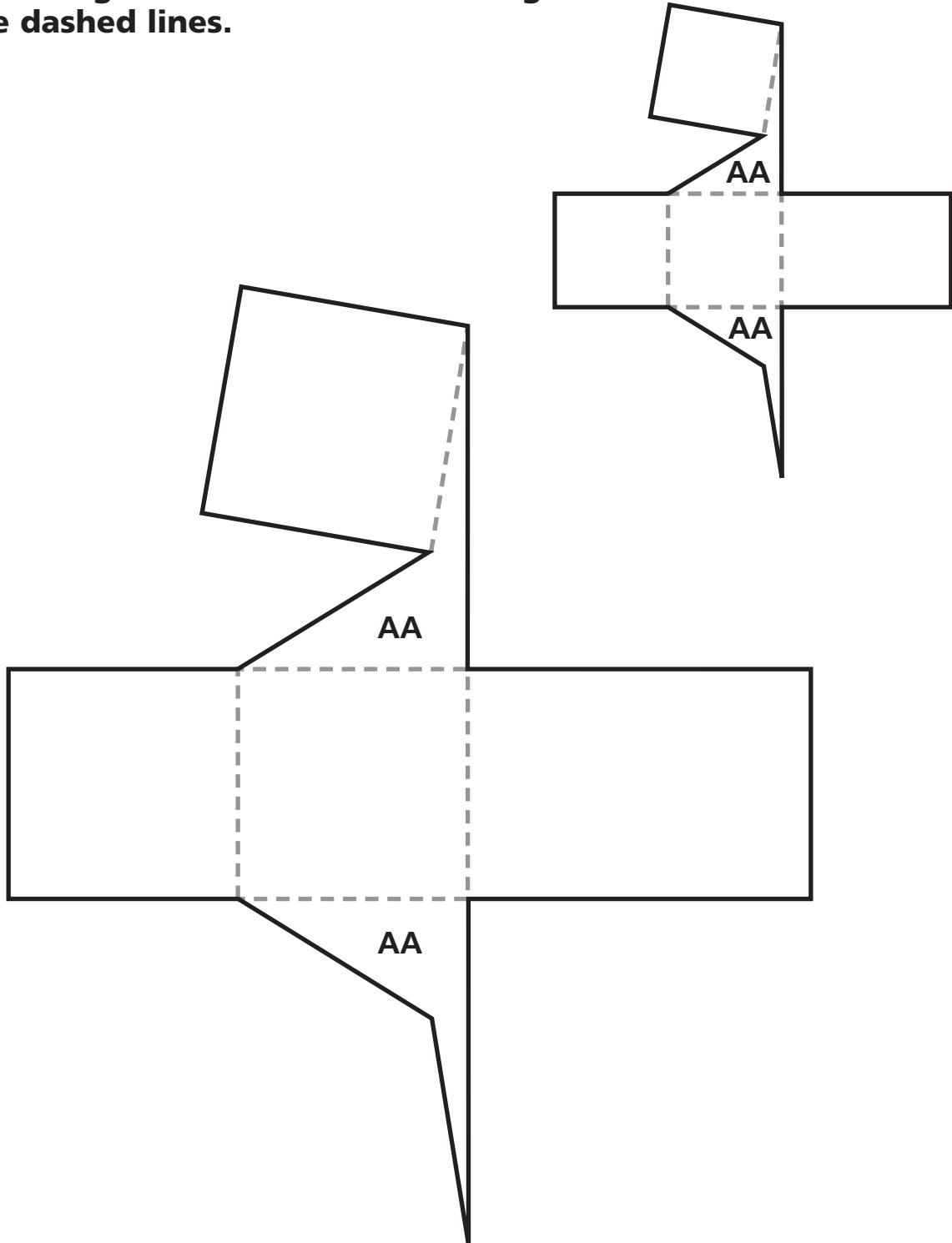
# Net ZZ

Cut along the solid lines. Fold along the dashed lines.



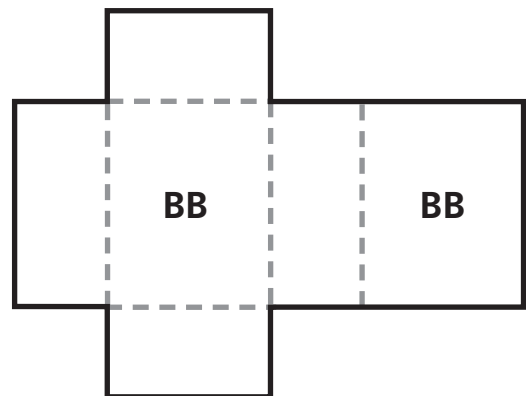
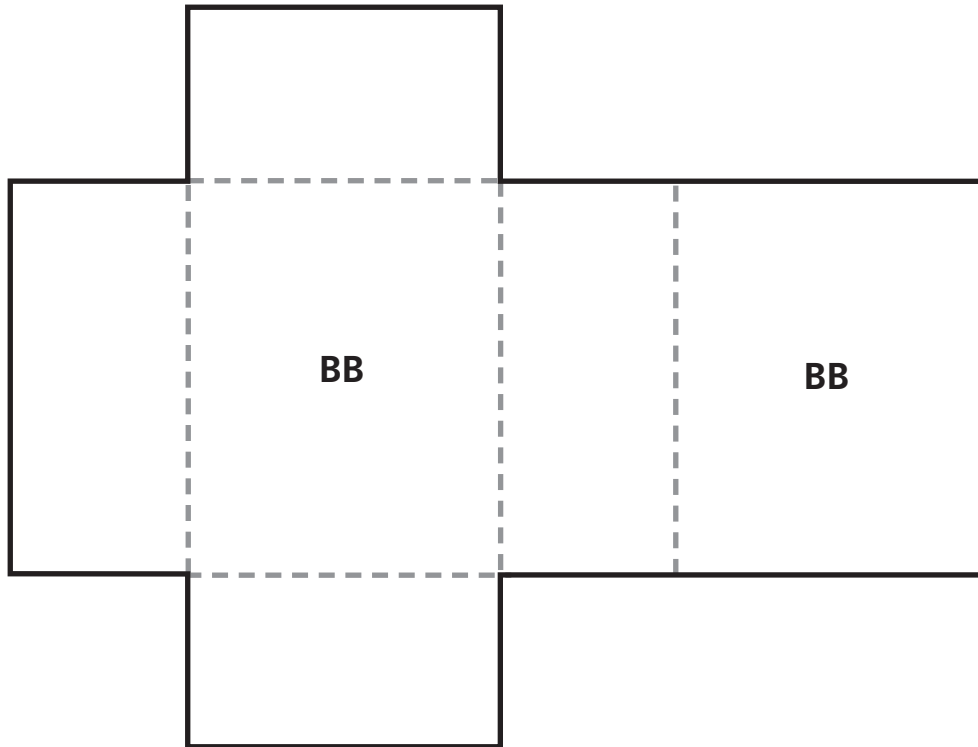
# Net AA

Cut along the solid lines. Fold along the dashed lines.



# Net BB

**Cut along the solid lines. Fold along the dashed lines.**



# Net CC

Cut along the solid lines. Fold along the dashed lines.

