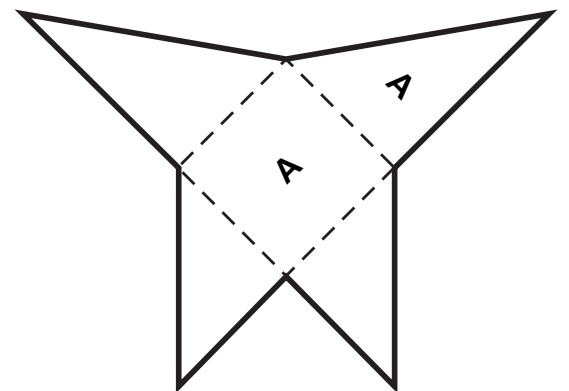
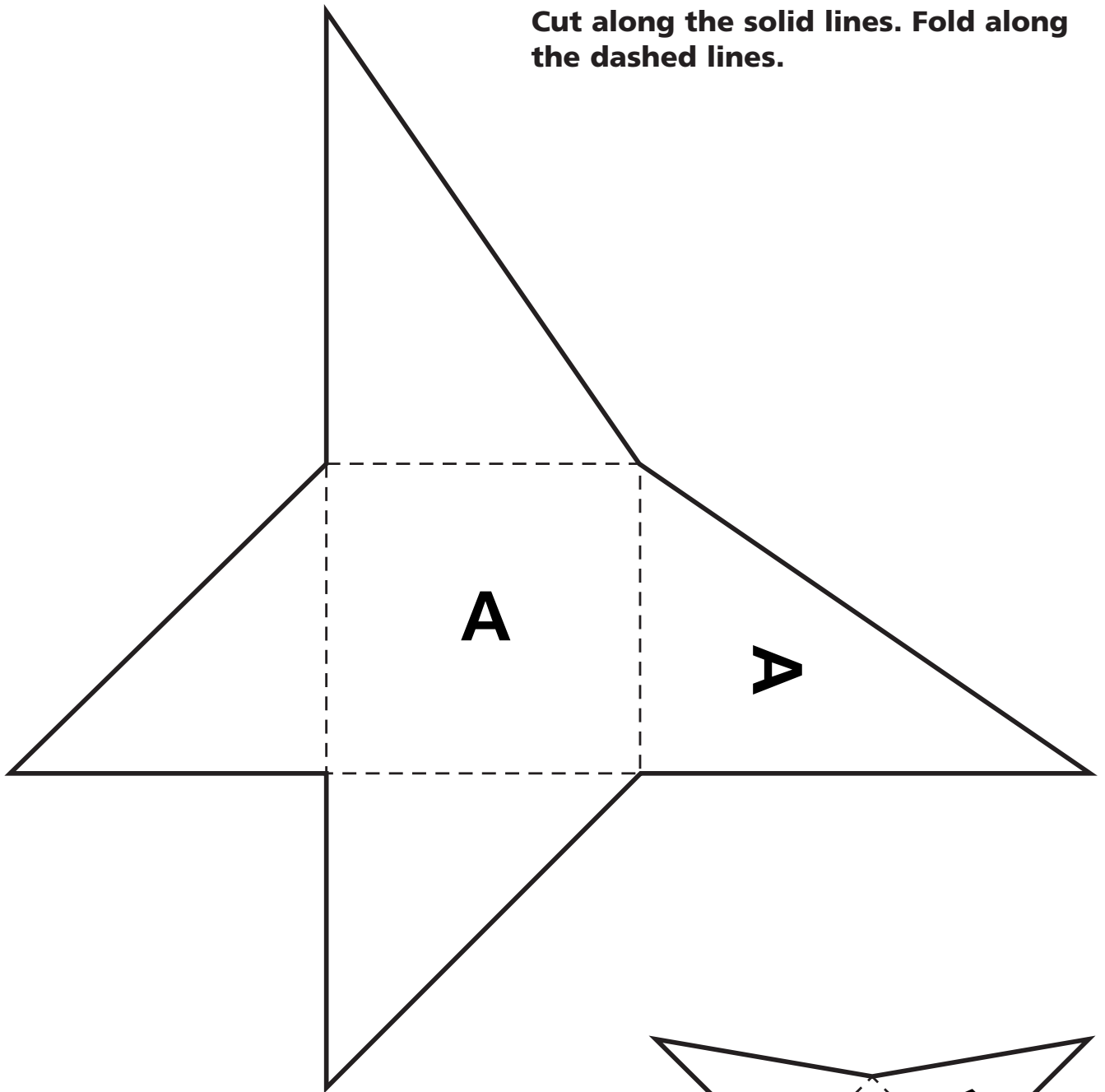


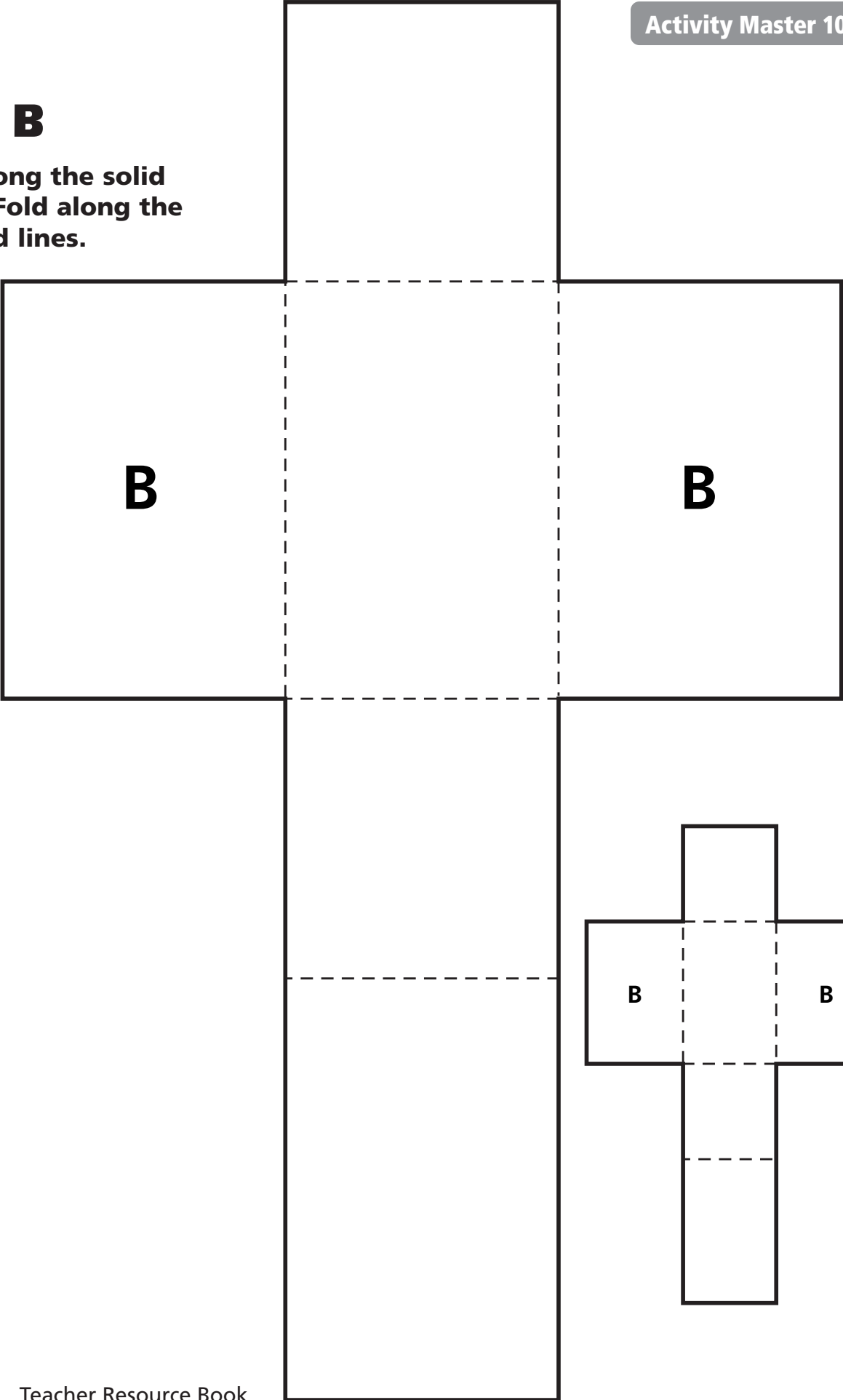
# Net A

**Cut along the solid lines. Fold along the dashed lines.**



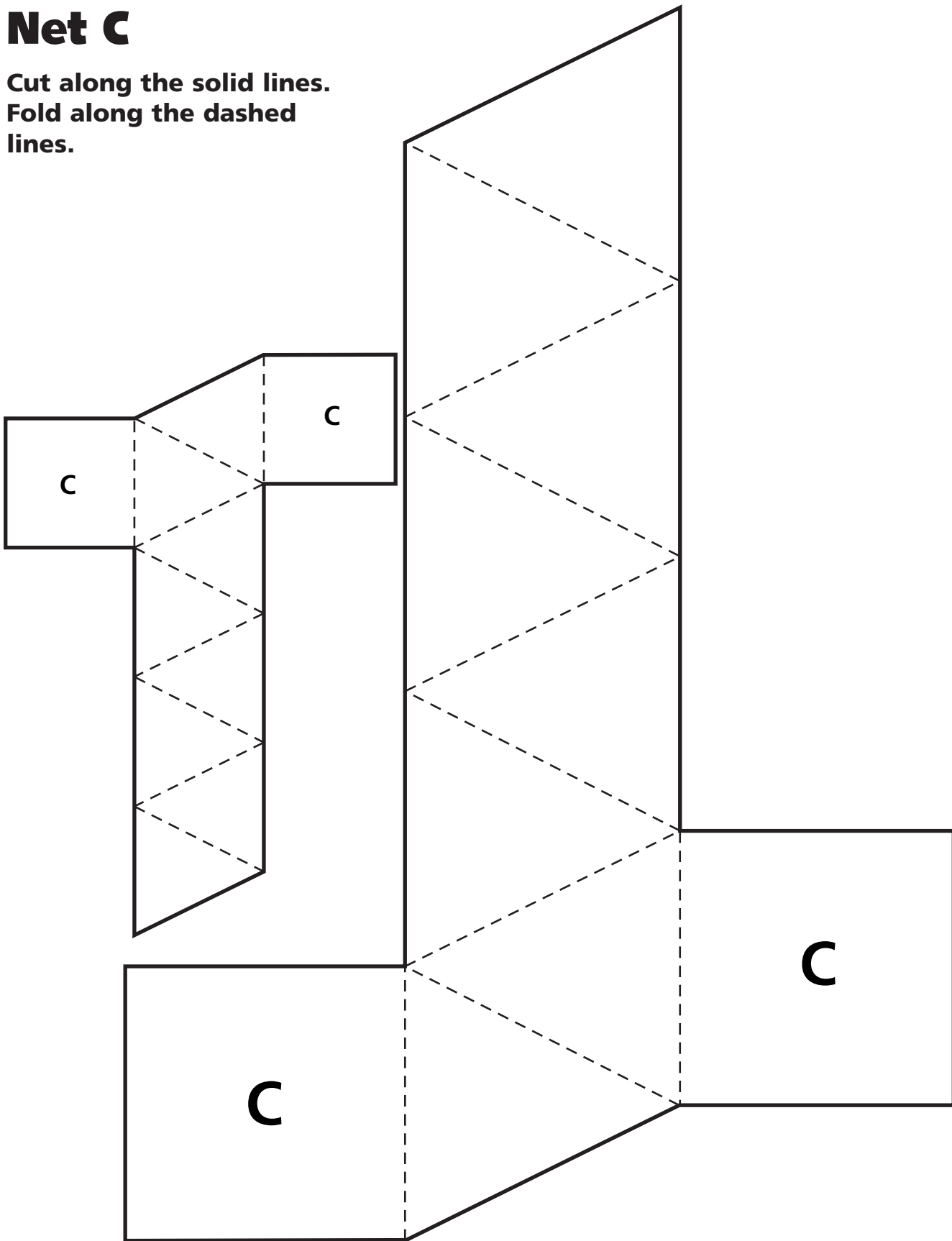
# Net B

Cut along the solid lines. Fold along the dashed lines.

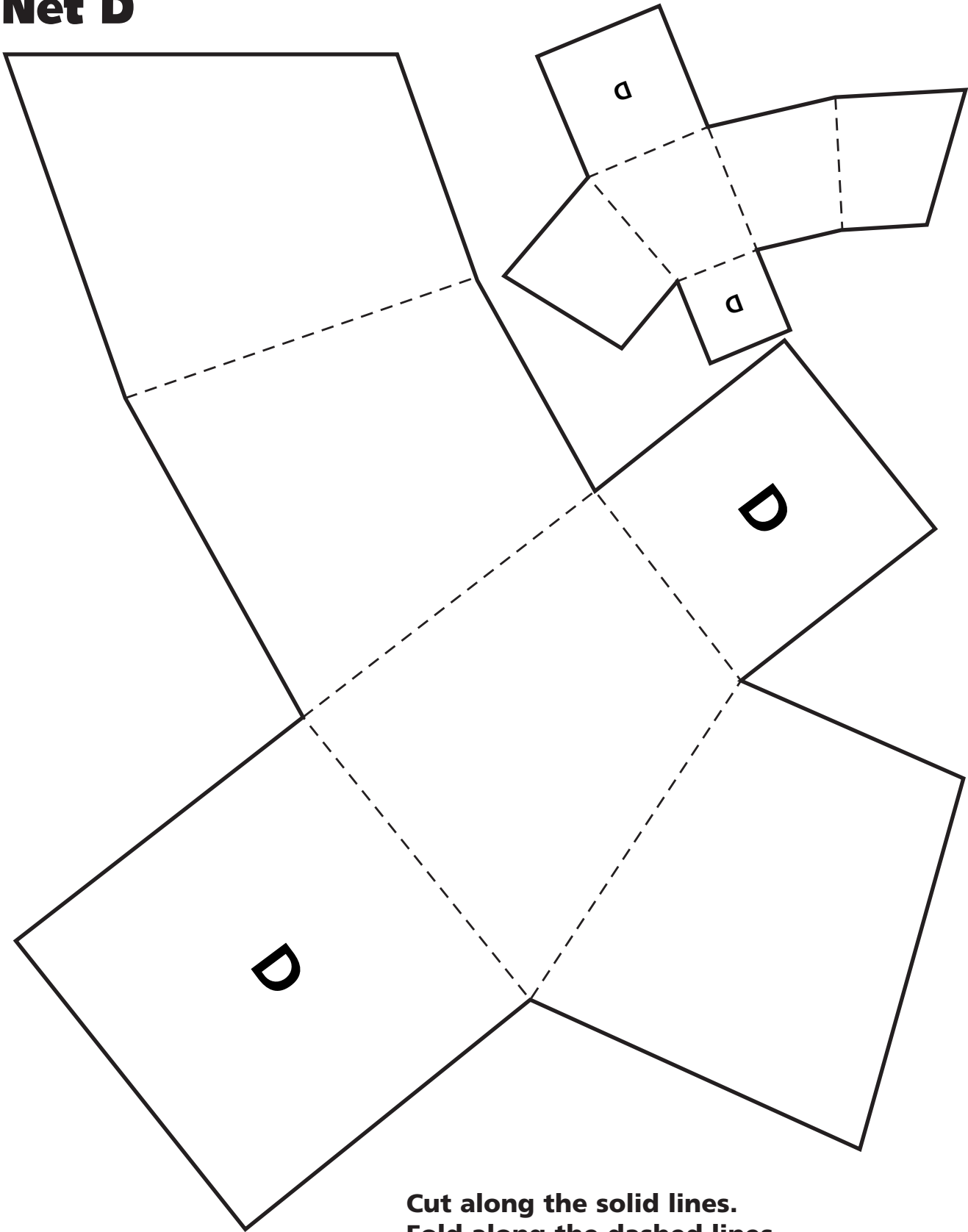


# Net C

Cut along the solid lines.  
Fold along the dashed lines.



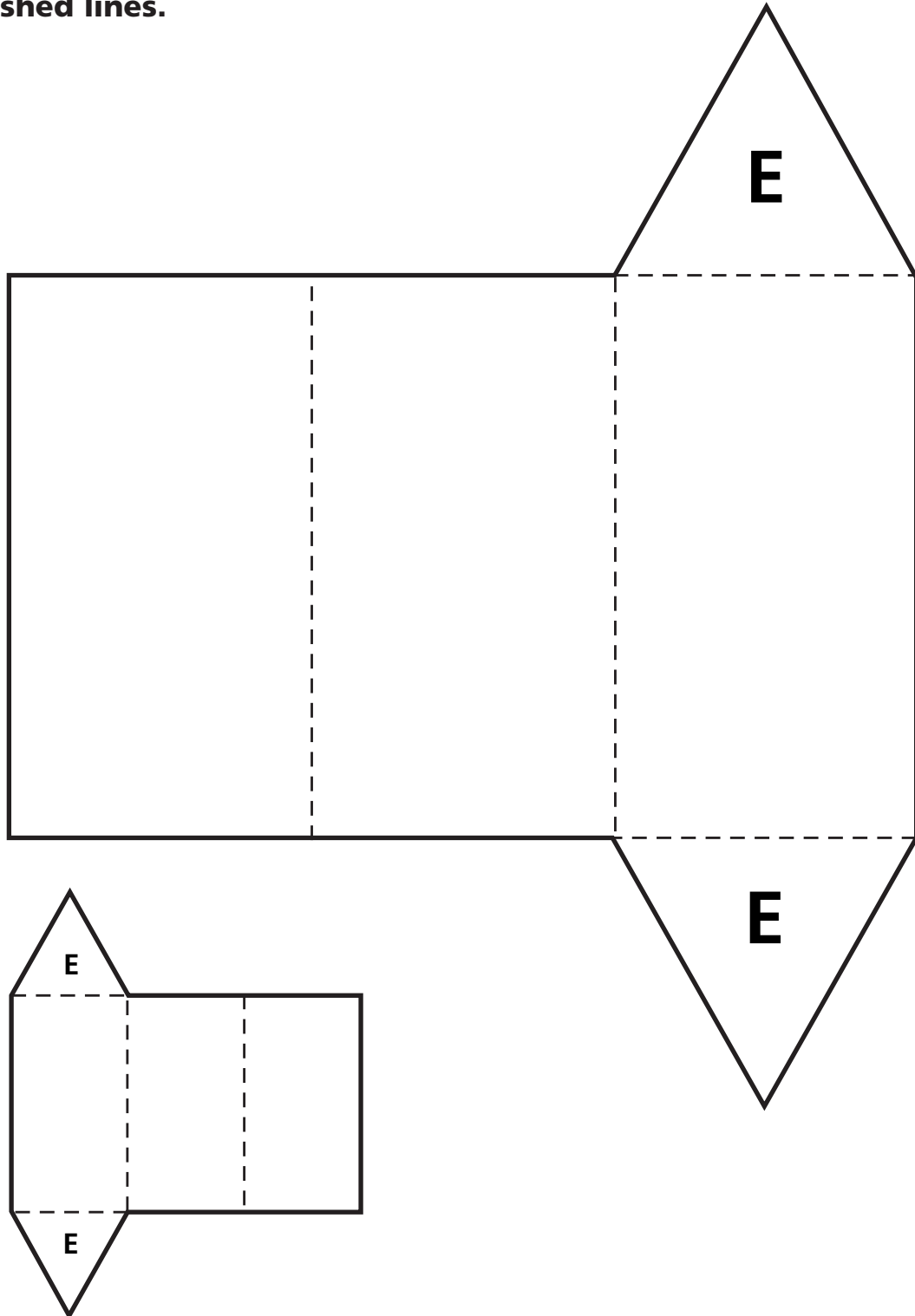
# Net D



**Cut along the solid lines.  
Fold along the dashed lines.**

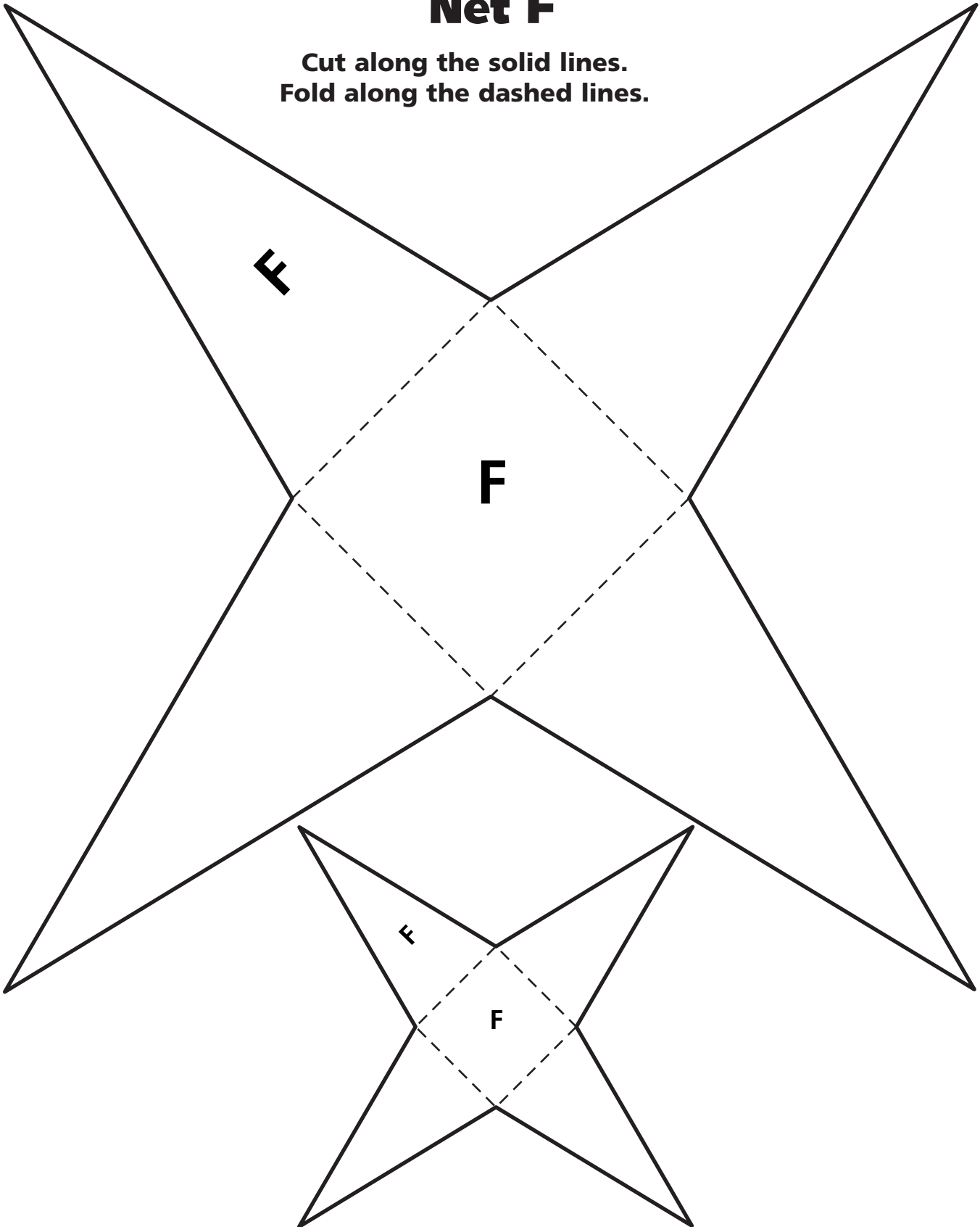
# Net E

**Cut along the solid lines. Fold along the dashed lines.**



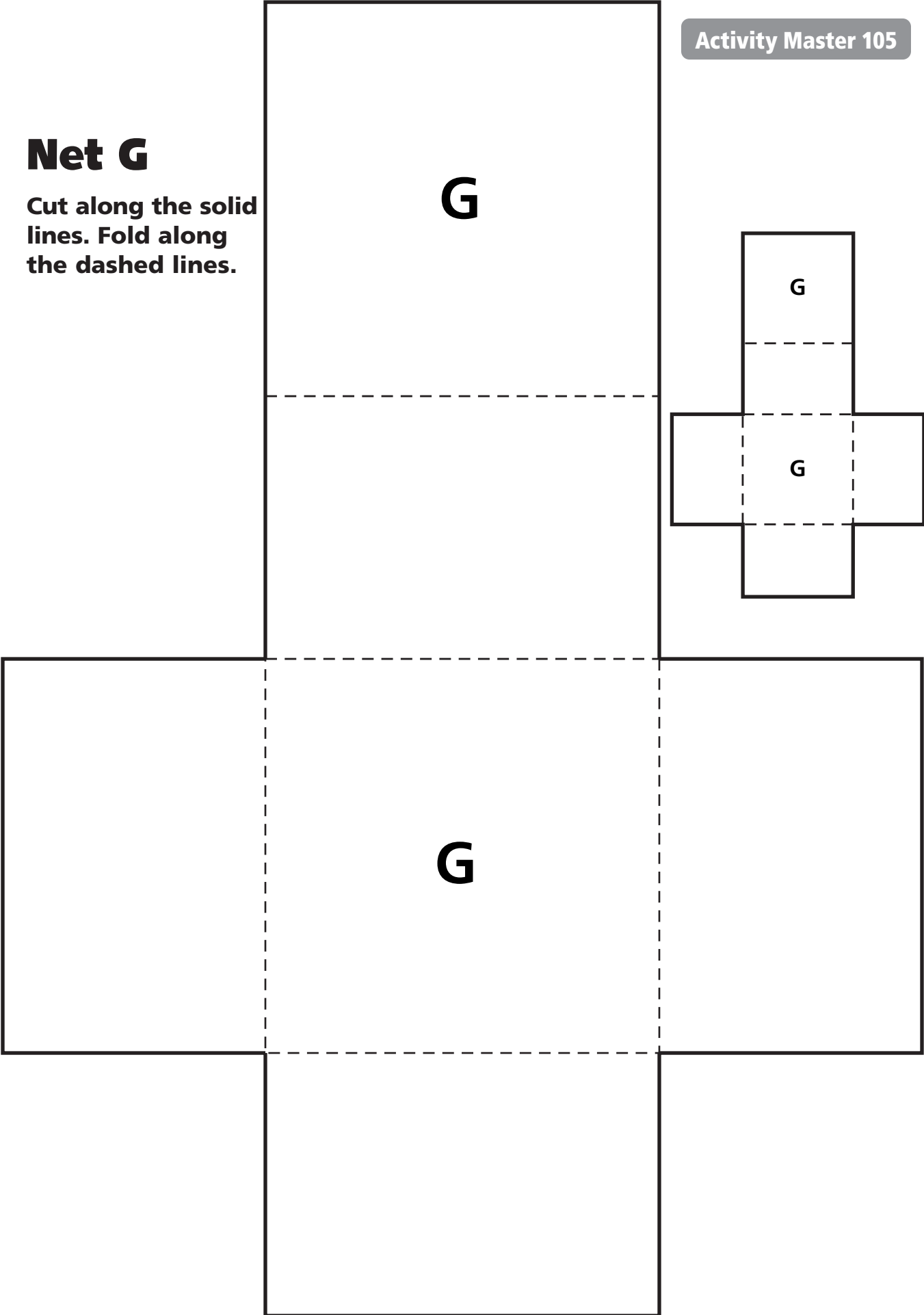
# Net F

**Cut along the solid lines.  
Fold along the dashed lines.**



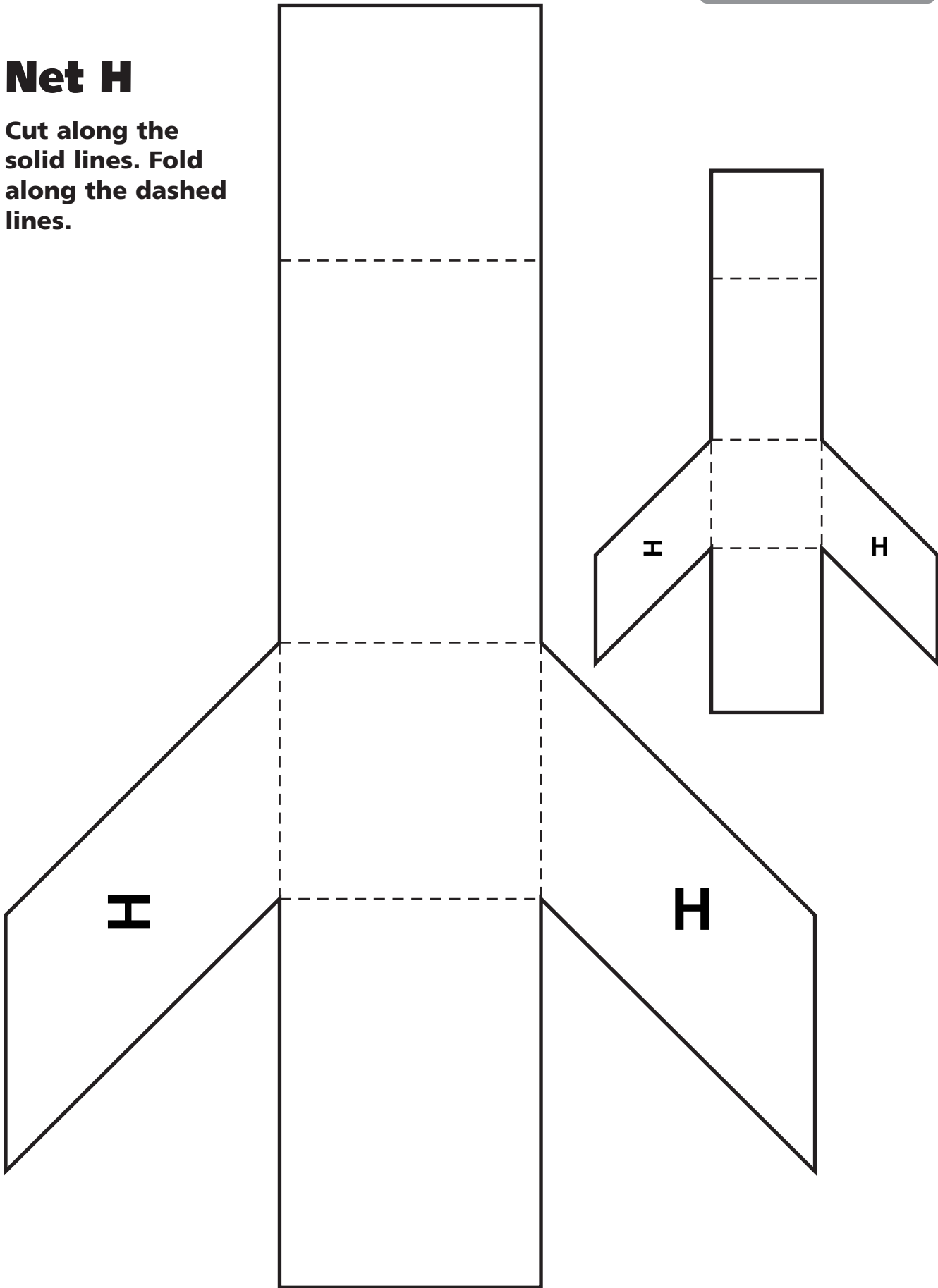
# Net G

Cut along the solid lines. Fold along the dashed lines.



# Net H

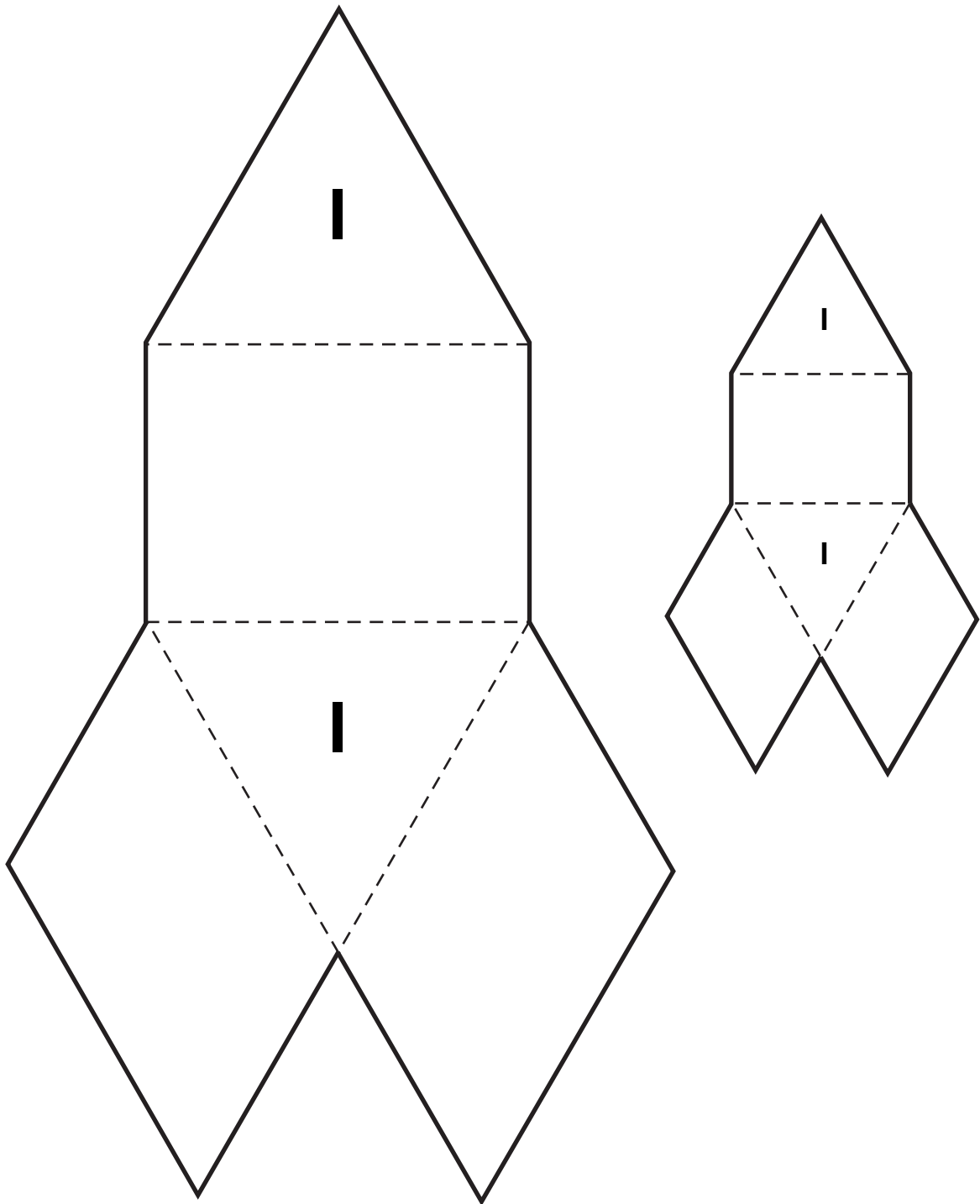
**Cut along the solid lines. Fold along the dashed lines.**





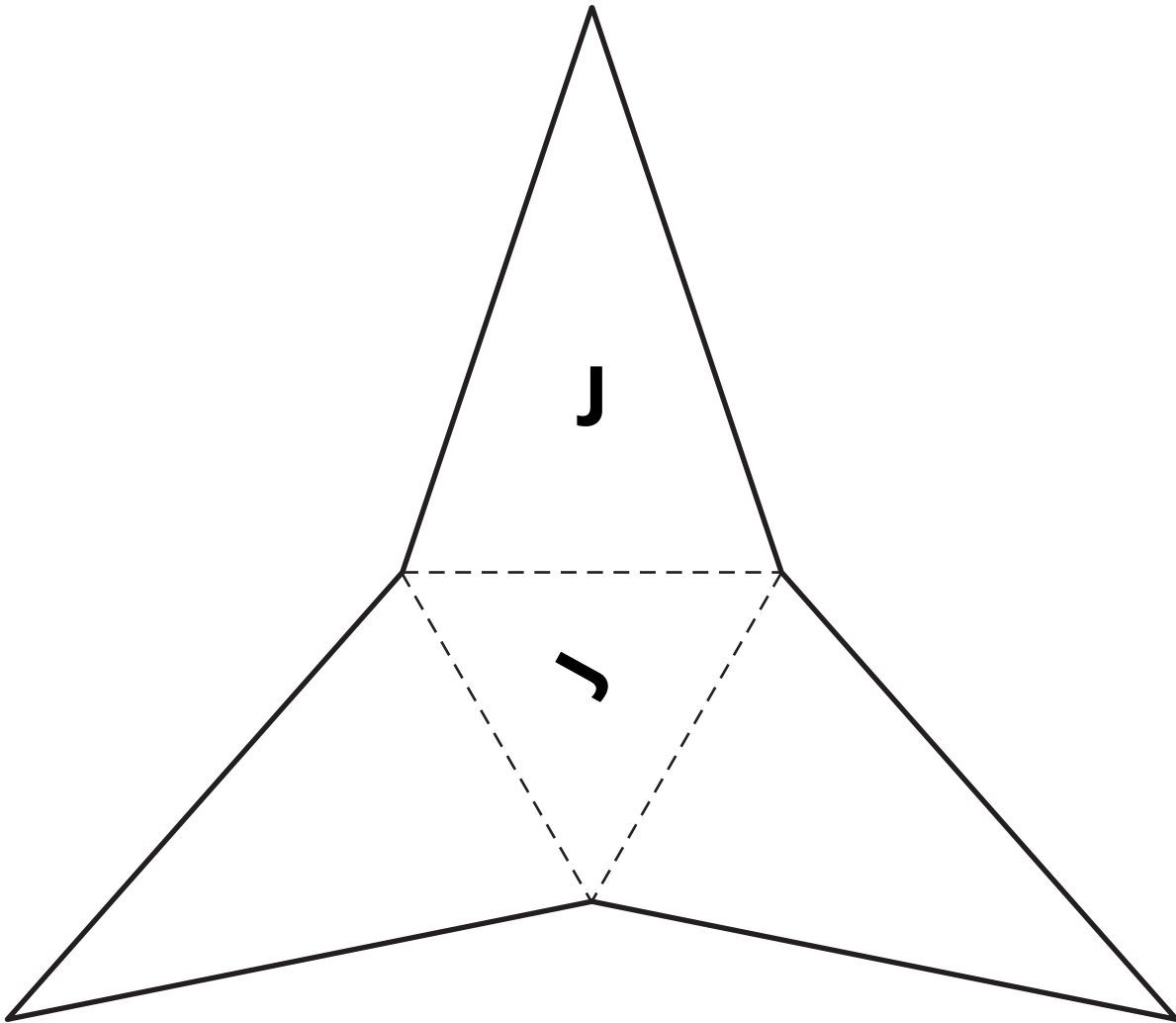
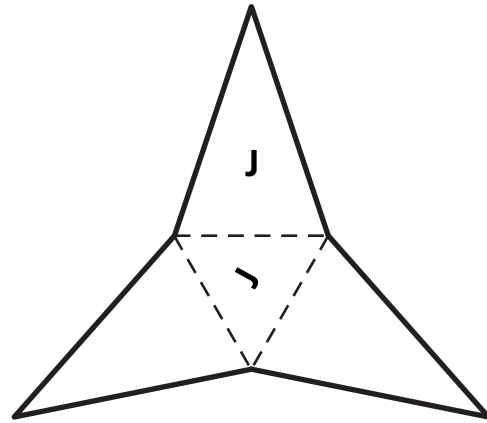
# Net I

**Cut along the solid lines. Fold along the dashed lines.**



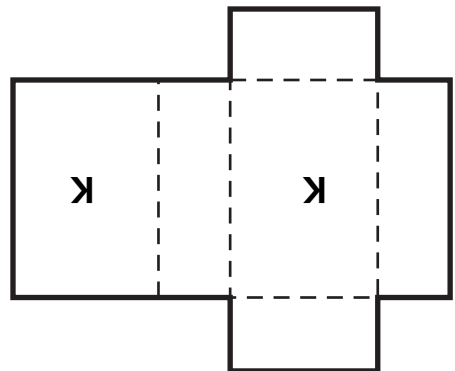
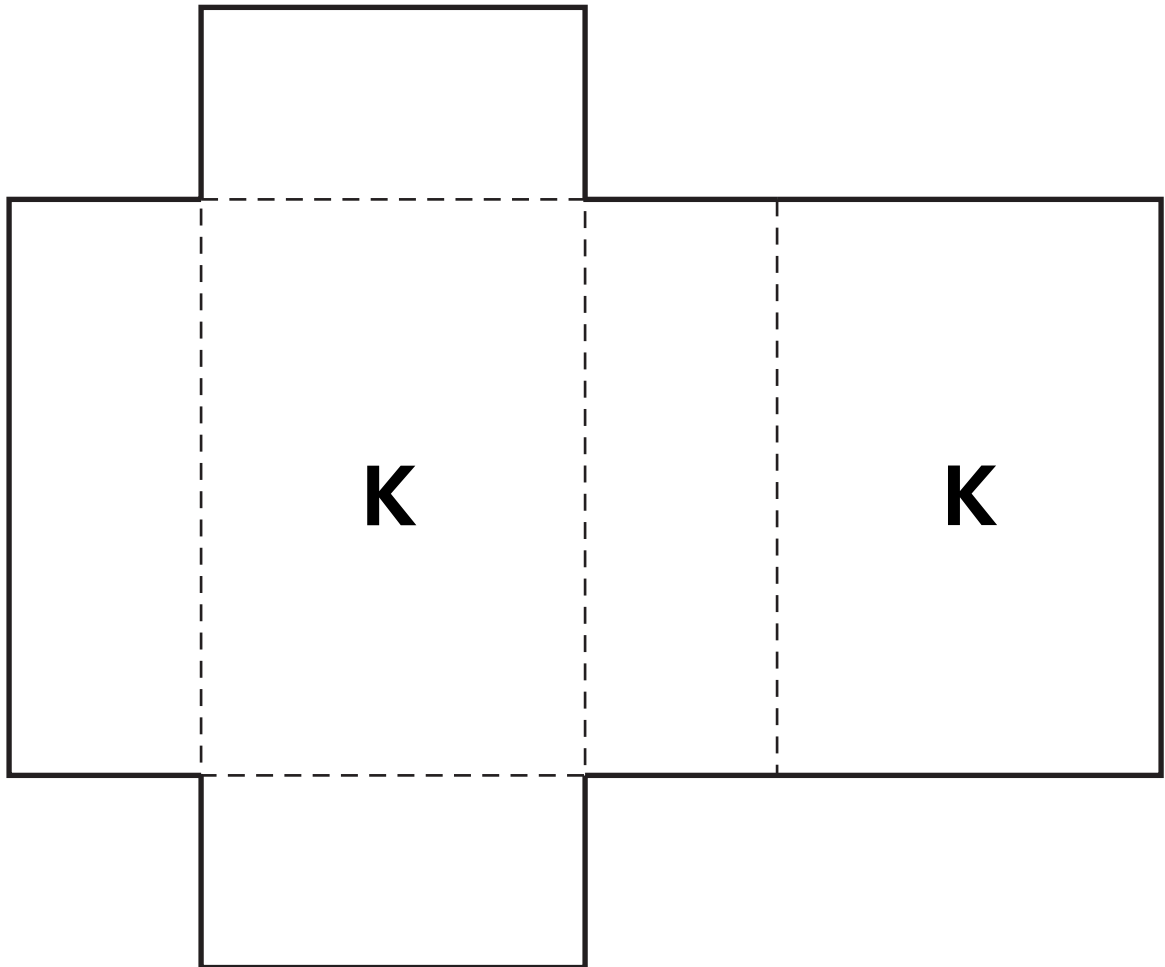
# Net J

**Cut along the solid lines. Fold along the dashed lines.**



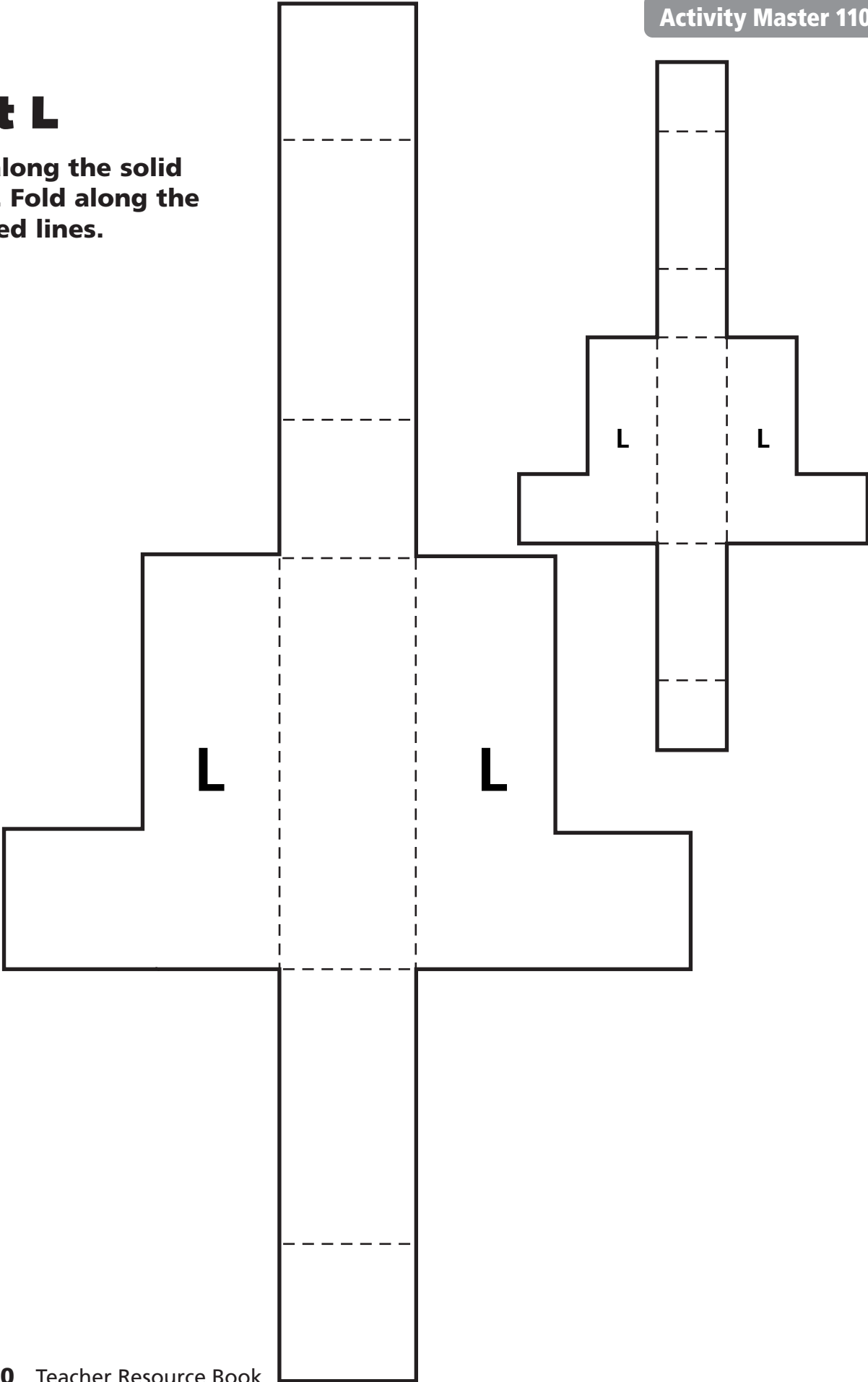
# Net K

**Cut along the solid lines. Fold along the dashed lines.**



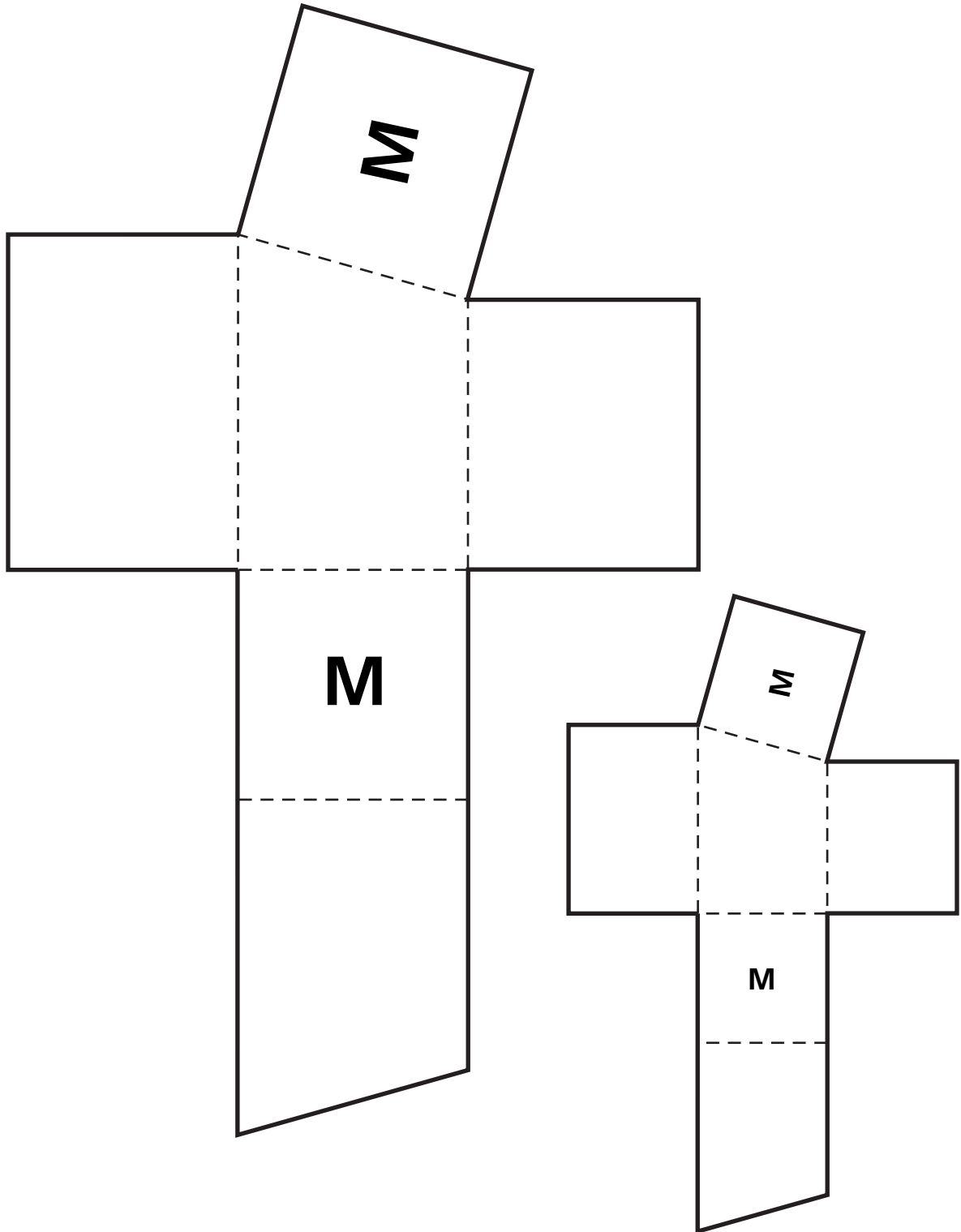
# Net L

Cut along the solid lines. Fold along the dashed lines.



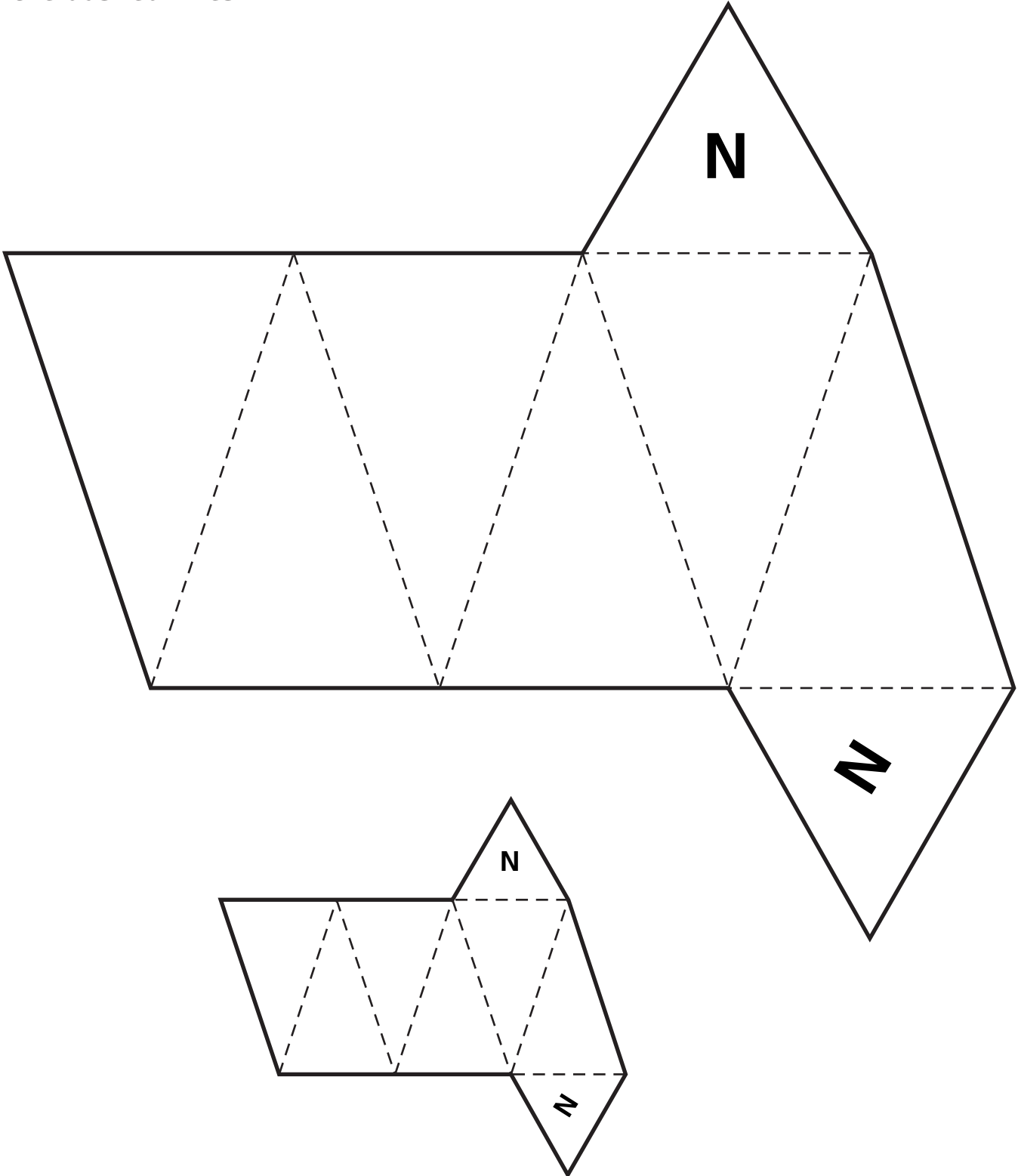
# Net M

**Cut along the solid lines. Fold along the dashed lines.**



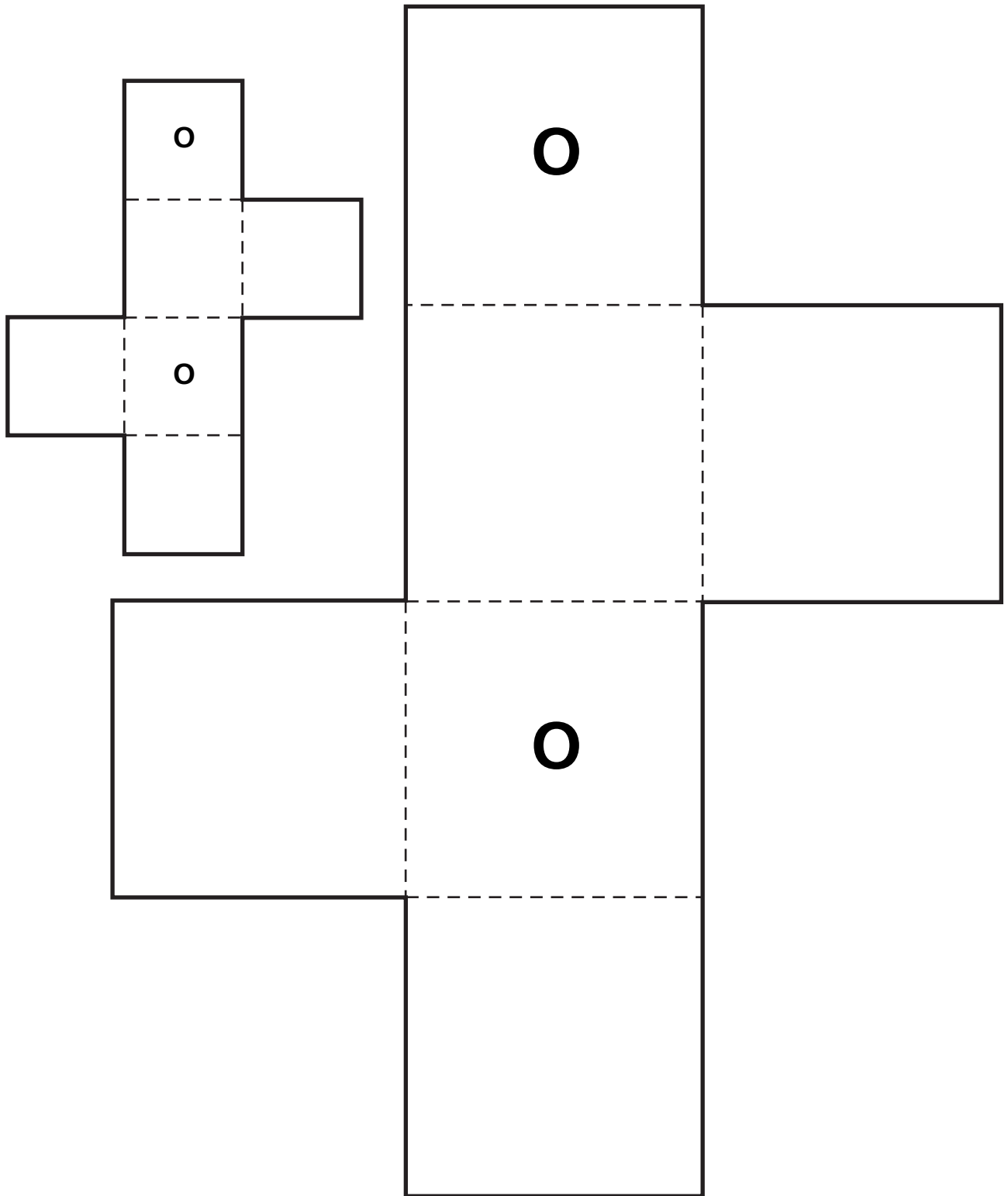
# Net N

**Cut along the solid lines. Fold along the dashed lines.**



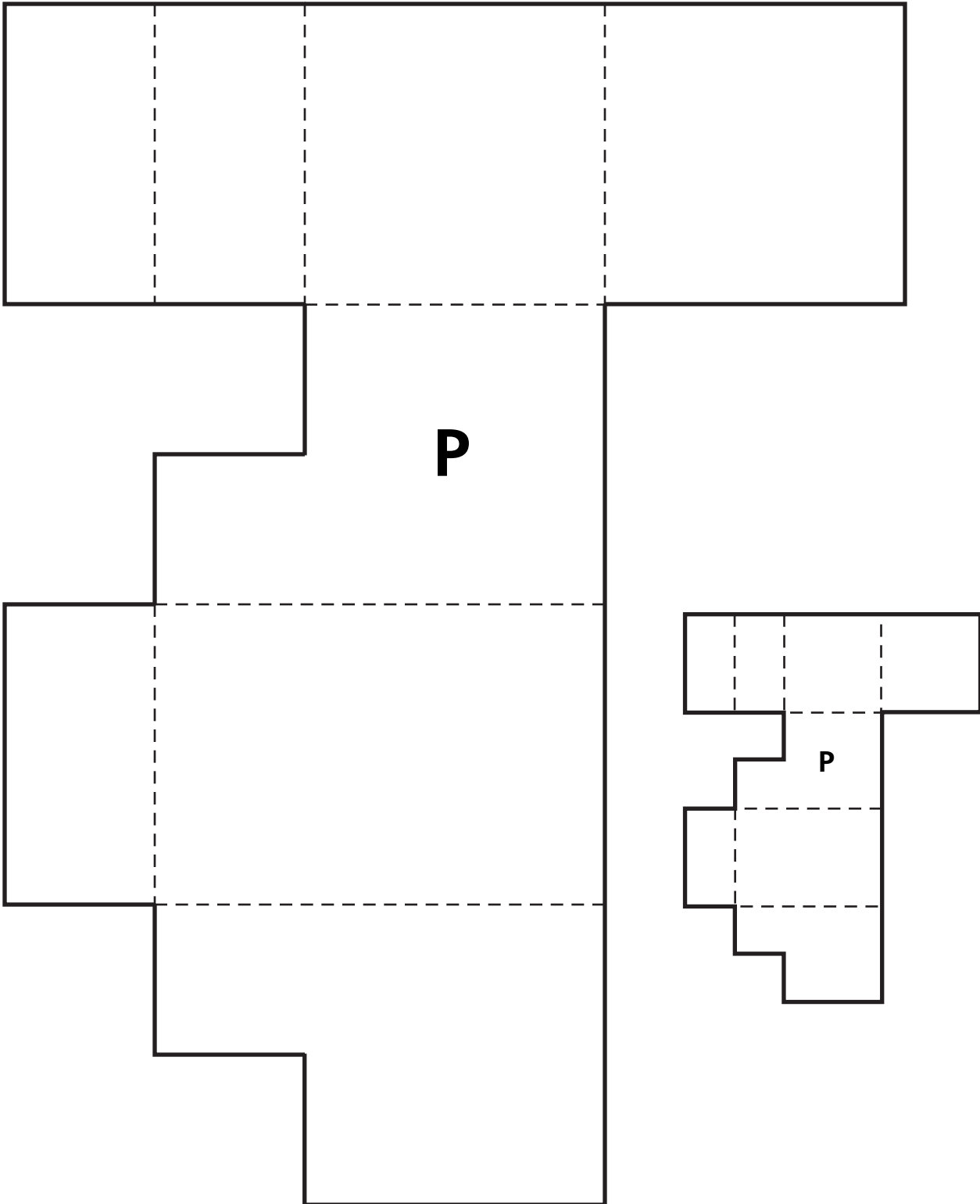
# Net O

Cut along the solid lines. Fold along the dashed lines.



# Net P

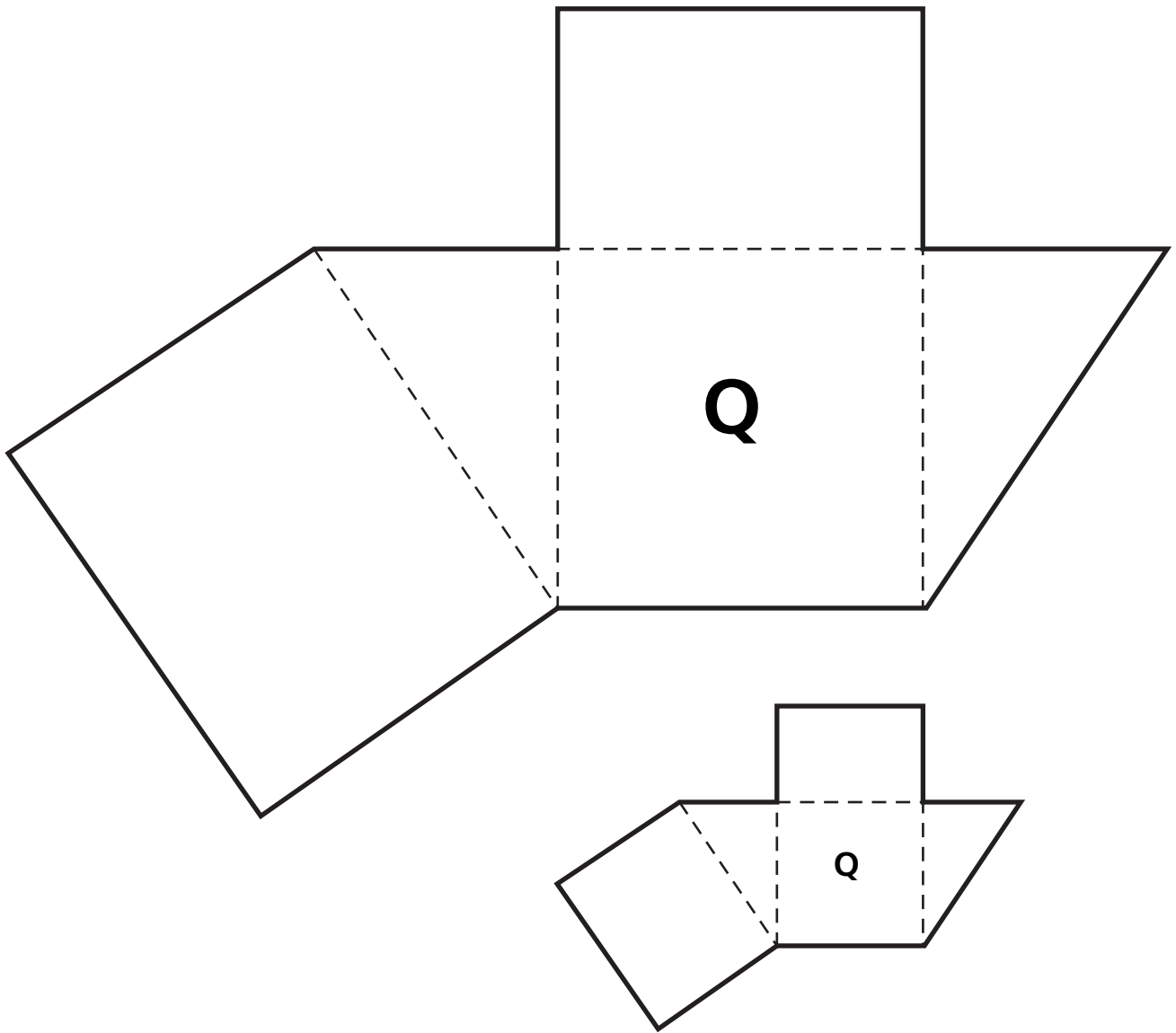
**Cut along the solid lines. Fold along the dashed lines.**





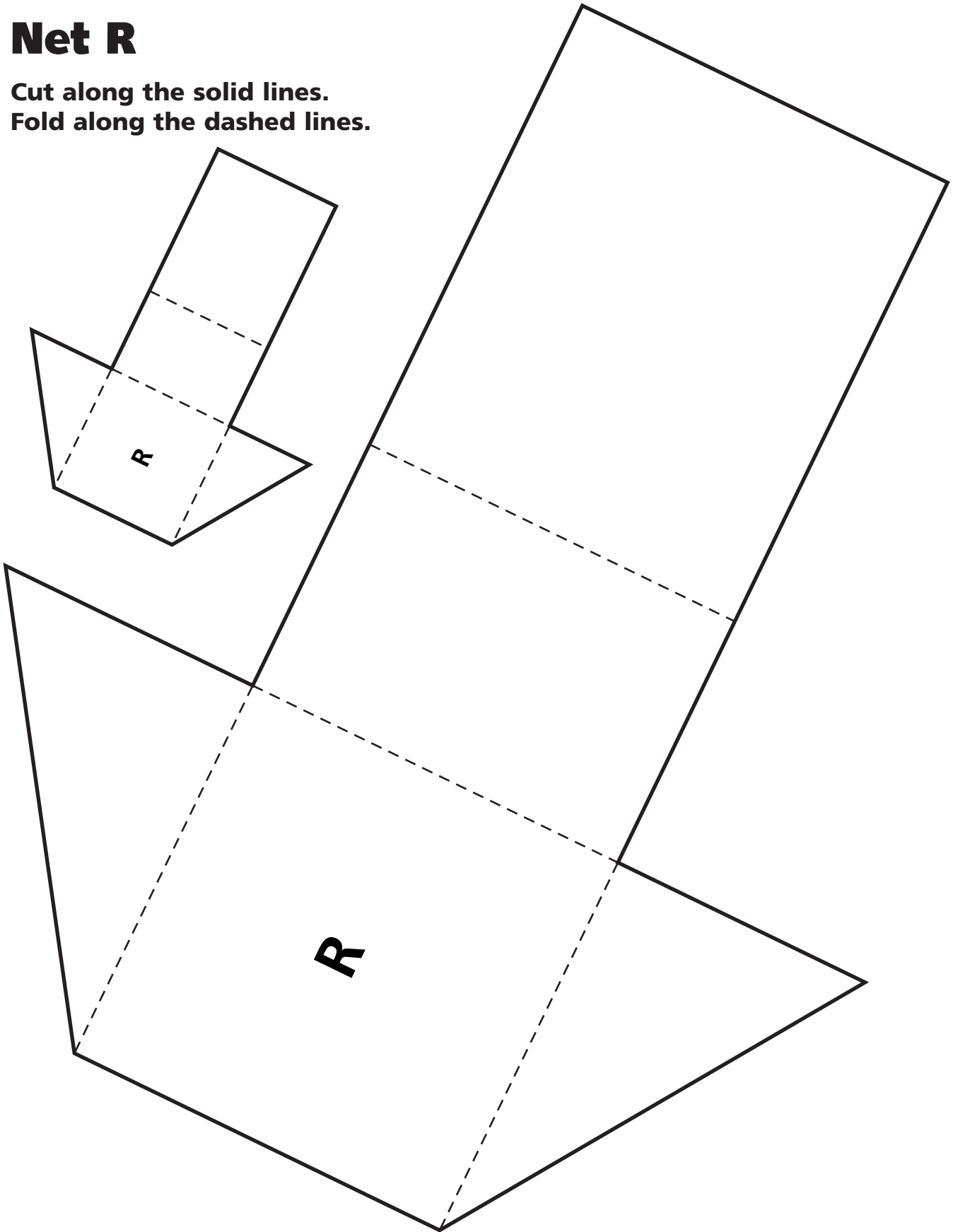
# Net Q

Cut along the solid lines. Fold along the dashed lines.



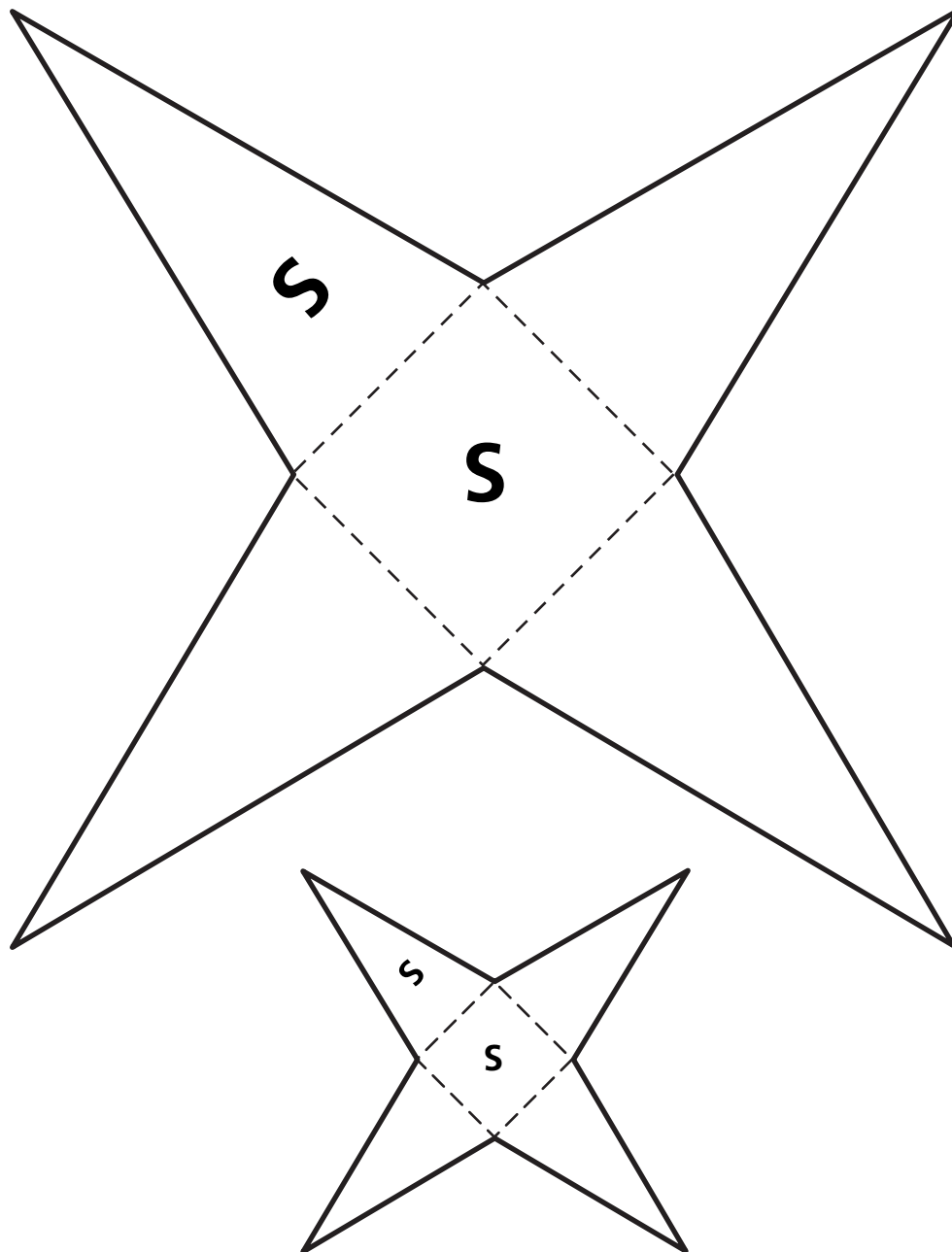
# Net R

**Cut along the solid lines.  
Fold along the dashed lines.**



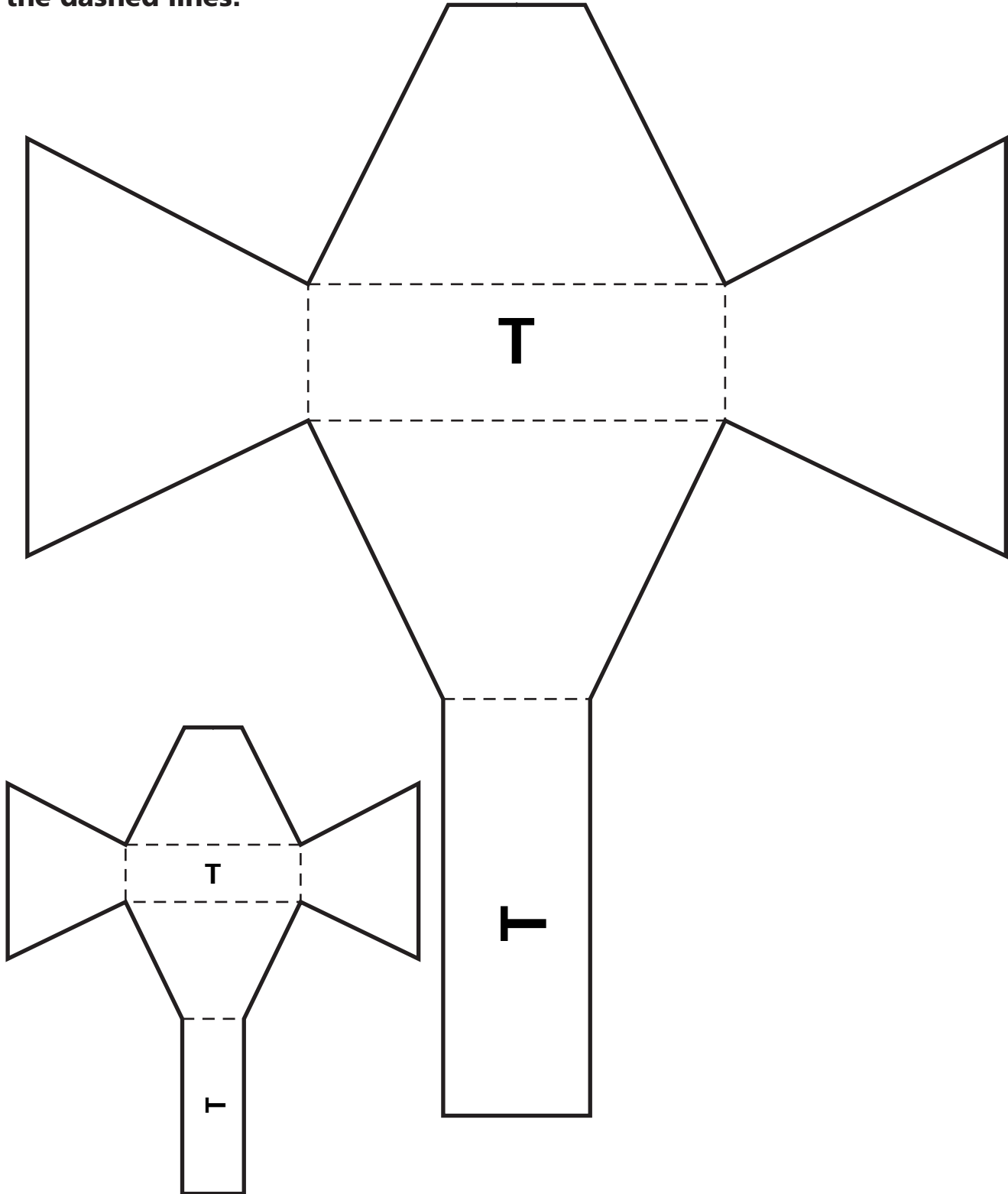
# Net S

Cut along the solid lines. Fold along the dashed lines.

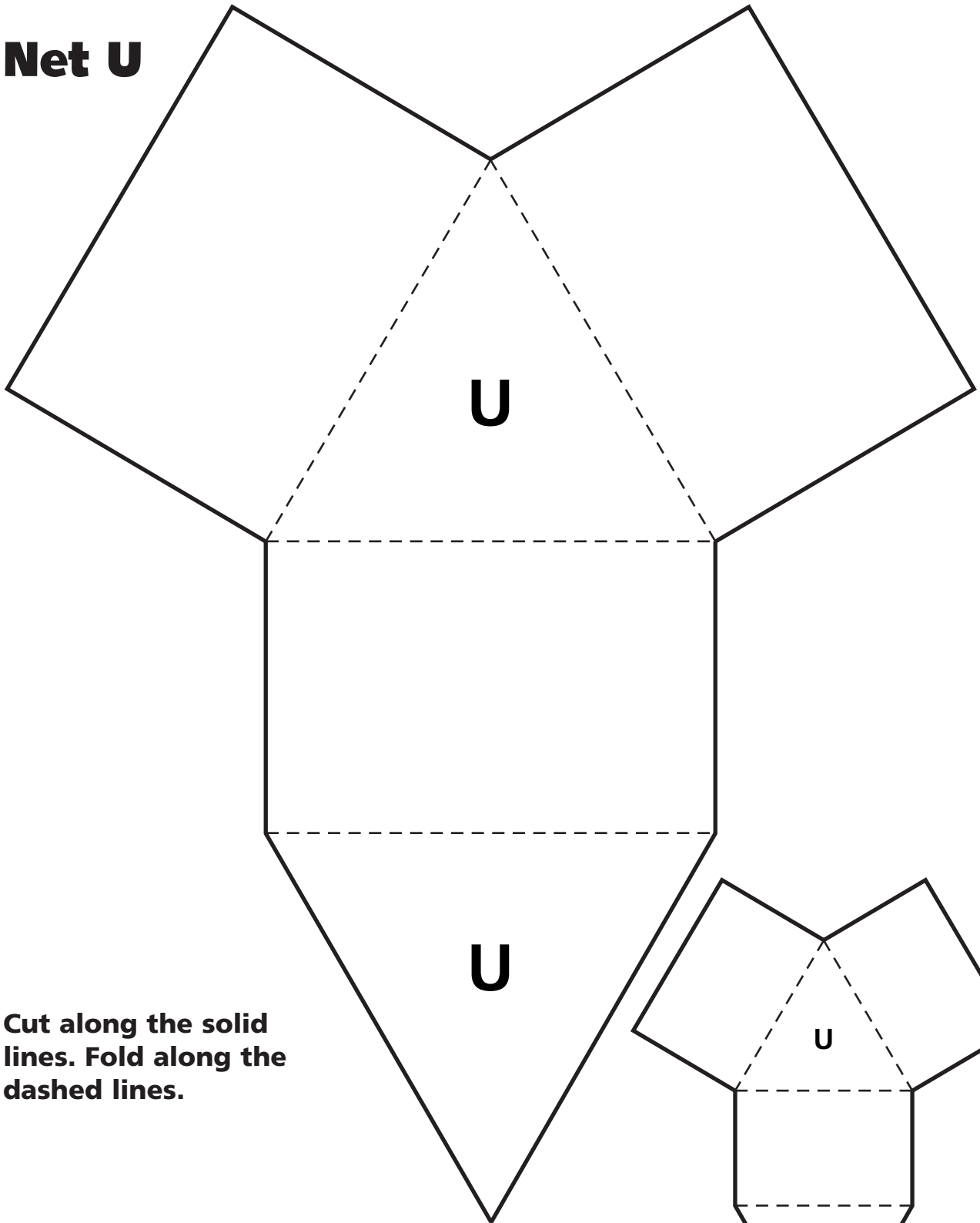


# Net T

**Cut along the solid lines. Fold along the dashed lines.**



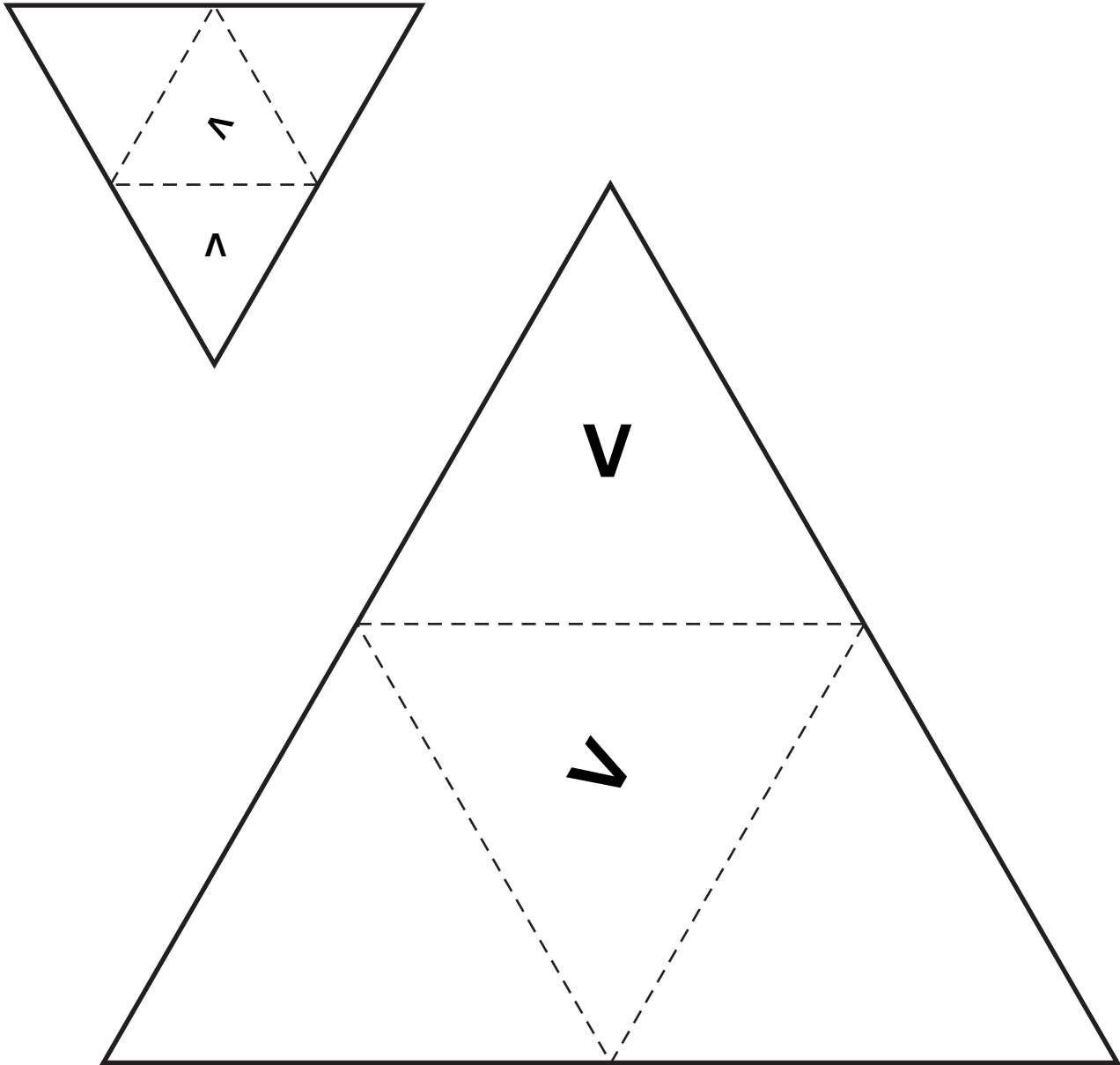
# Net U



**Cut along the solid lines. Fold along the dashed lines.**

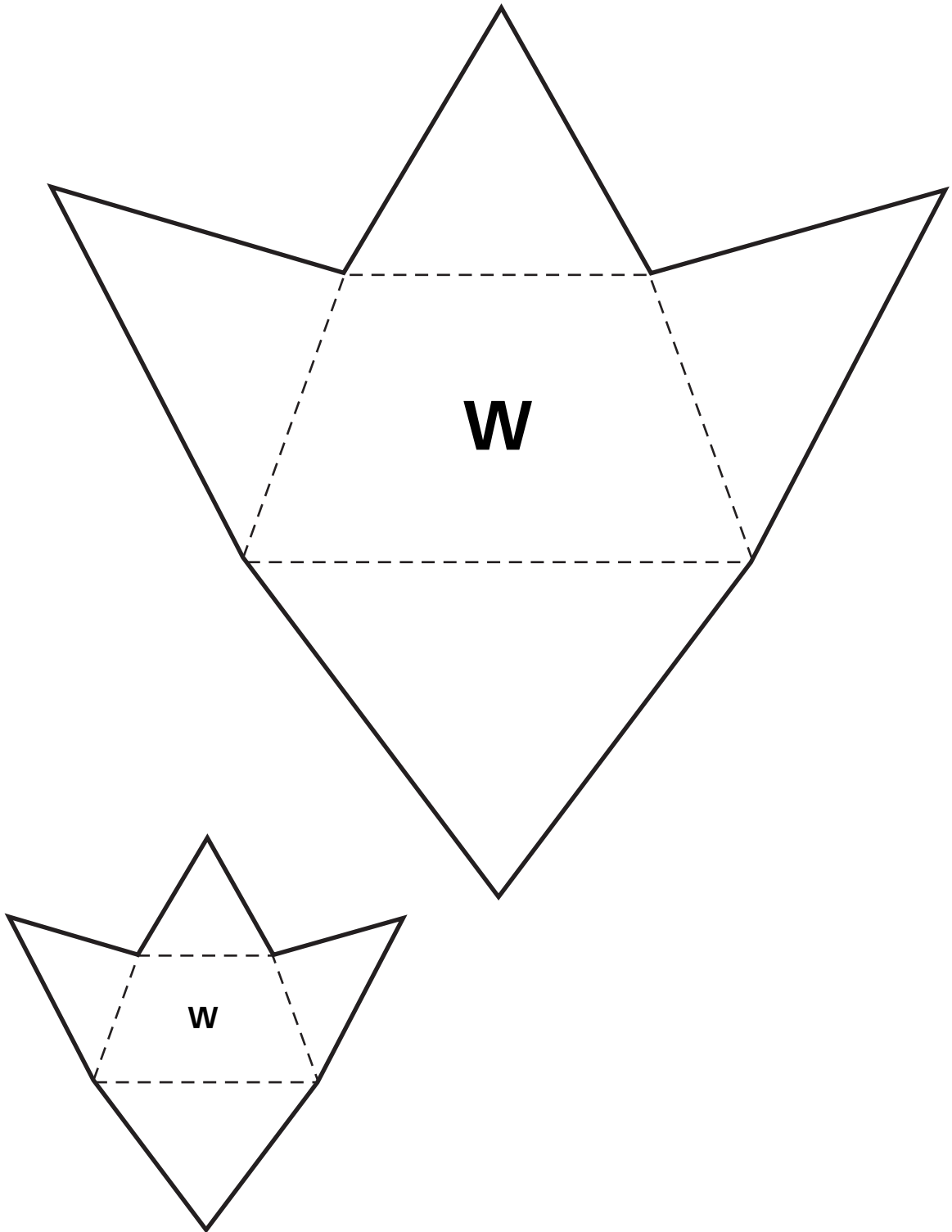
# Net V

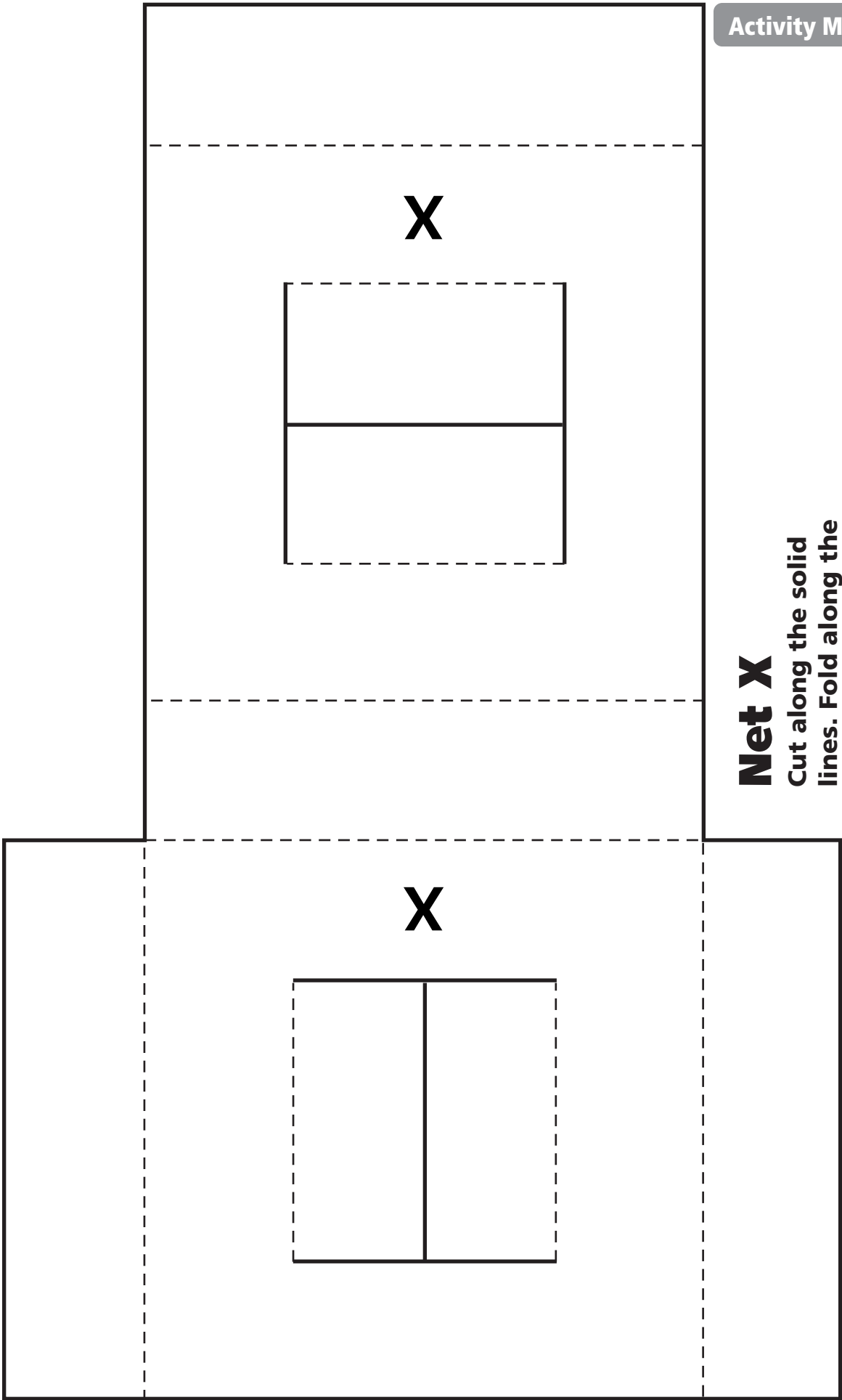
**Cut along the solid lines. Fold along the dashed lines.**



# Net W

**Cut along the solid lines. Fold along the dashed lines.**





# Net X

Cut along the solid lines. Fold along the dashed lines.