

Area of Nets

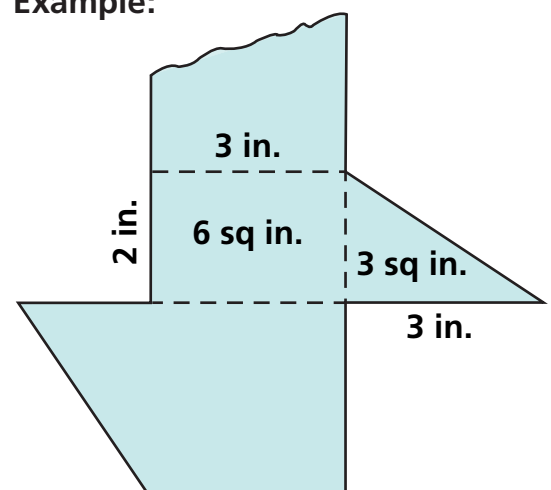
NCTM Standards 1, 3, 4, 6, 7, 8, 9, 10

Use a net for Figures AA, BB, or CC.

- 1 Tape or paste the small copy of the net here.

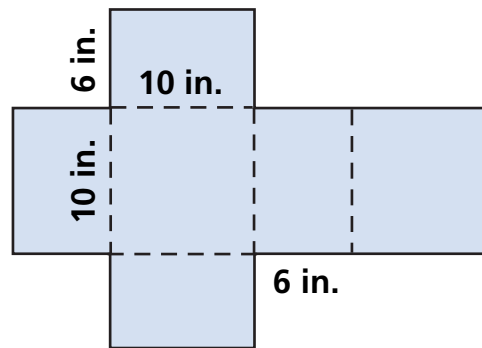
- 2 Label your small net to show the true dimensions (full-size) of each face of your three-dimensional figure. Measure to the nearest half-inch.
- 3 Label your small net to show the area of each face of your three-dimensional figure.
- 4 What is the total area of your large net?

Example:

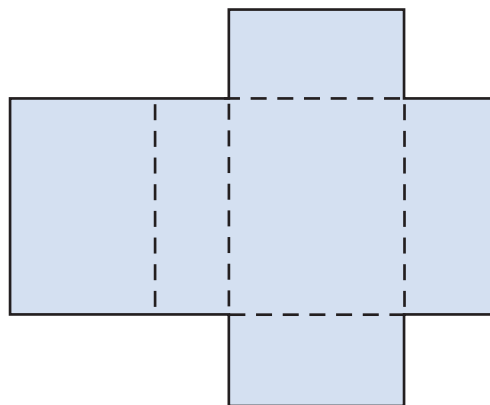


Solve the problems.

- 5 Jonah was not sure he had enough wrapping paper to wrap a gift box. He measured the box and wrote the measurements on a net sketch. How much wrapping paper does he need to cover the box?



- 6 Courtney made only a few measurements to figure out how much wrapping paper she needed to wrap a tall, rectangular prism-shaped box. The small rectangular base measured 5 in. by 10 in. The height of the box is 12 in. How much wrapping paper does she need?



Use this net if you wish.



- 7 **Challenge** Tell how you would find the total area of a net of a triangular prism. Tell all the measurements you would make and how you would compute the area with those measurements.
