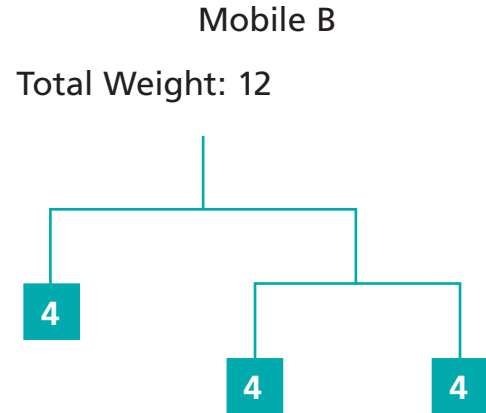
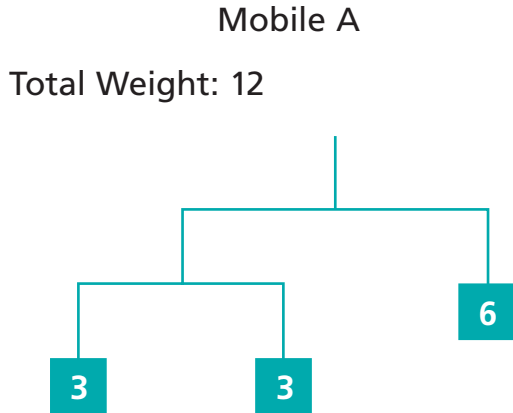


Introducing Mobiles

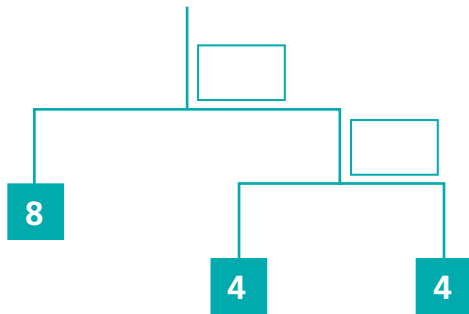
NCTM Standards 1, 2, 7, 9, 10

- 1 Rubin balanced some, but not all of the arms of a mobile. Write the letter of the diagram for Rubin's unbalanced mobile.

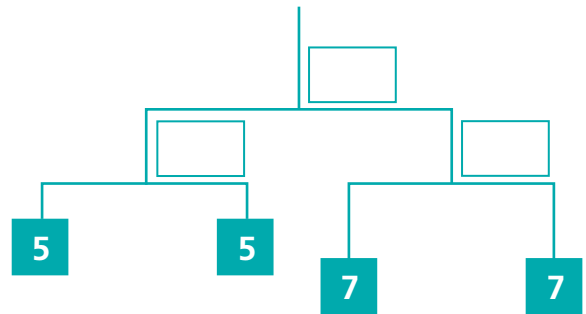


Write *yes* or *no* at each arm to show if it is balanced.
Write the total weights.

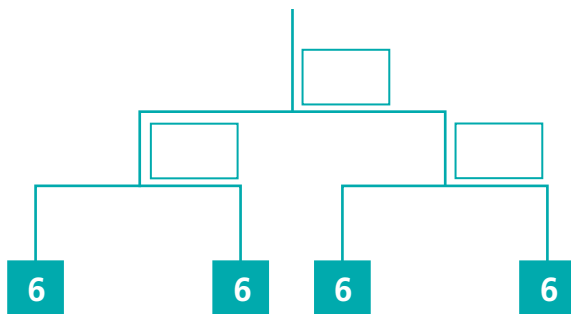
- 2 Total Weight: _____



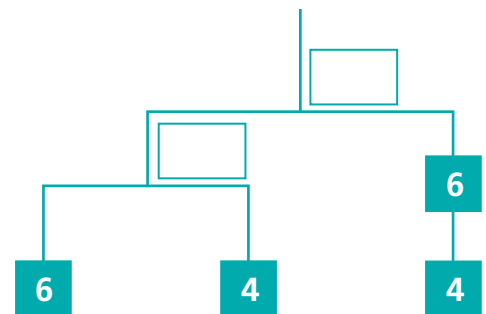
- 3 Total Weight: _____



- 4 Total Weight: _____

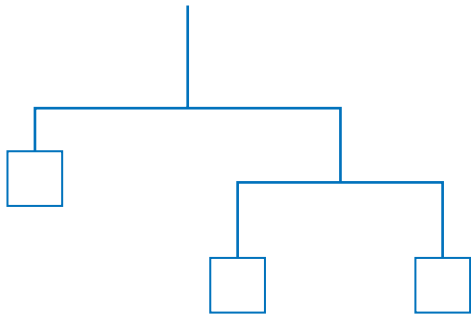


- 5 Total Weight: _____

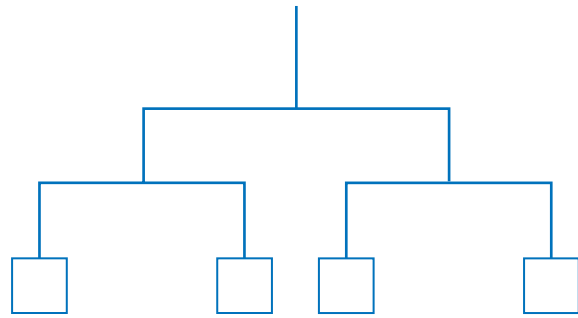


Complete the mobiles so that they are balanced.

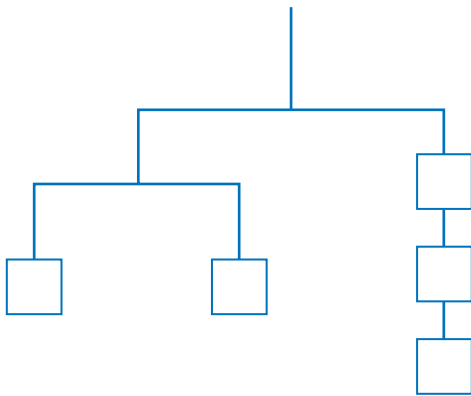
7 Total Weight: 28



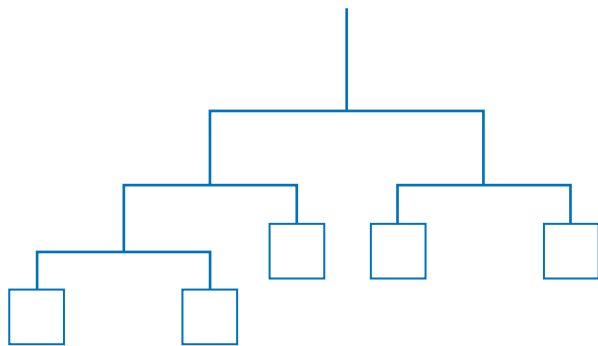
8 Total Weight: 48



9 Total Weight: 32



10 Total Weight: 72



11 Challenge Make up your own balanced mobile for any number that is a multiple of 4.

Total Weight: _____

